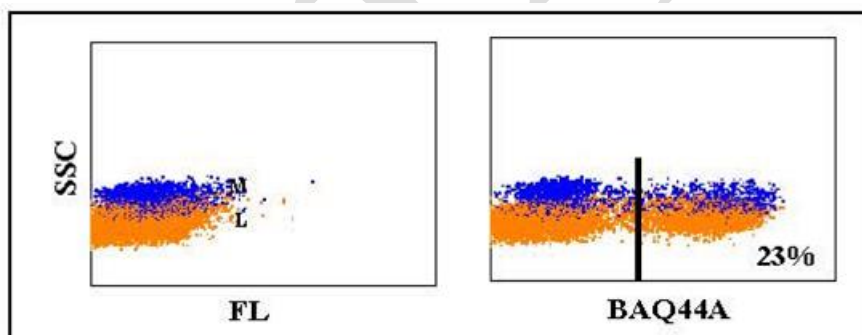


ANTI-BOVINE B CELL MONOCLONAL ANTIBODY



- Description:** Anti-bovine B cell (CD equivalent unknown) monoclonal antibody
- Catalog Number:** WS0511B-100
- Lot Number:** WS020524
- Host:** Mouse
- Quantity:** 100 µg
- Concentration:** 1 mg/mL
- Volume:** 100 µL
- Reactivity:** Bison, Bovine, Canine, Caprine, Feline, Human, Ovine, Water Buffalo
- Clone:** BAQ44A
- Isotype:** IgM
- Expansion:** The monoclonal antibody was produced in ascites fluid, clarified by filtration through a 0.2 micrometer filter.
- Applications:**
- **Flow Cytometry**
- Optimal dilutions should be determined for each application.

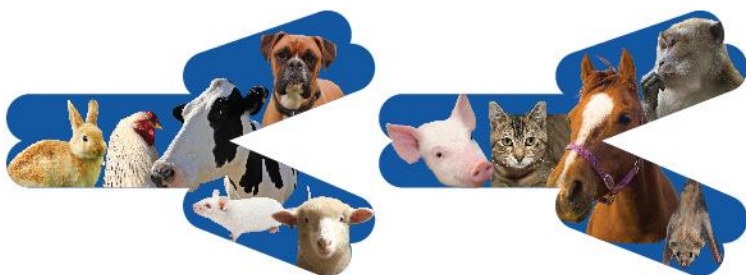


Flow cytometric profile obtained with bovine leukocytes.

- Formulation:** 1X PBS containing 0.09% NaN₃
- Stability and Storage:** Stable for up to twelve months from date of receipt at 2-8°C.
- Country of Origin:** USA
- Warranty:**

Products are warranted by Kingfisher Biotech, Inc. to meet stated product specifications and to conform to label descriptions when used, handled and stored according to instructions. Unless otherwise stated, this warranty is limited to one year from date of sale or expiry date, whichever comes first. Kingfisher Biotech's sole liability for the product is limited to replacement of the product or refund of the purchase price. Kingfisher Biotech products are supplied for research applications. They are not intended for medicinal, diagnostic or therapeutic use. The products may not be resold, modified for resale or used to manufacture commercial products without prior written approval from Kingfisher Biotech, Inc.

©02/08/2022



Reagents for Animal Model and Animal Health Research

1000 Westgate Drive, St. Paul, MN 55114
Customer.Service@KingfisherBiotech.com
KingfisherBiotech.com
651.646.0089