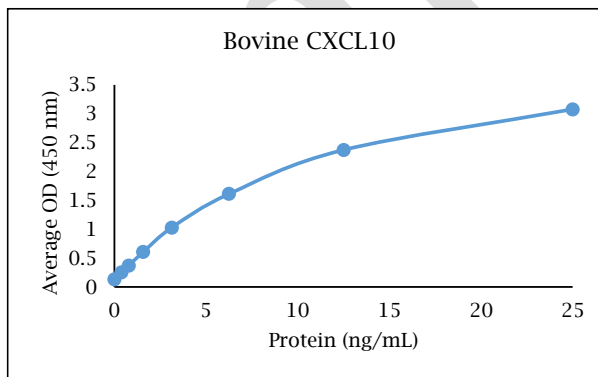


ANTI-BOVINE CXCL10

Biotinylated Polyclonal Antibody



- Description:** Biotinylated anti-bovine CXCL10 polyclonal antibody
- Catalog Number:** PBB0393B-050
- Lot Number:** HZ6667BZ
- Quantity:** 50 µg
- Concentration:** 1.0 mg/mL
- Volume:** 50 µL
- Host:** Rabbit
- Alias:** IP-10
- Purification:** Bovine CXCL10 affinity chromatography
- Immunogen:** Recombinant bovine CXCL10
- Molecular Weight:** 9.3 kDa (calculated) for bovine CXCL10
- Formulation:** 1X PBS buffer containing 0.09% NaN₃
- Stability and Storage:** Stable for up to twelve months from date of receipt at 2-8°C.
- Country of Origin:** USA
- Applications:** ELISA - 0.1-0.5 µg/mL
The recommended concentrations are approximate values. Optimal dilutions should be determined for each application.



Reagent

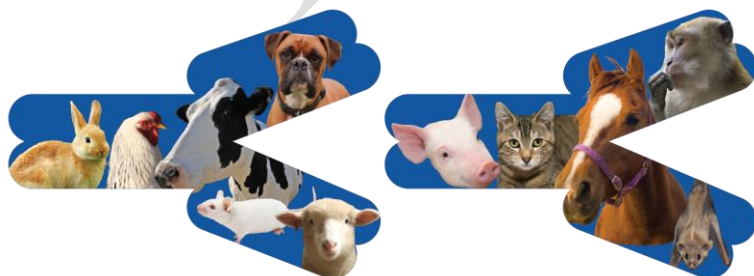
Capture Antibody
Standard Protein
Detection Antibody
SA-HRP
TMB

Information

2.5 µg/mL for 12-24 hours
1 hour incubation
0.2 µg/mL for 1 hour
Use as recommended.
30 minute incubation

Catalog Number

PB0385B-100
RP0079B-005
PBB0393B-050
AR0068-001
AR0133-002



Reagents for Animal Model and Animal Health Research

1000 Westgate Drive, St. Paul, MN 55114
Customer.Service@KingfisherBiotech.com
KingfisherBiotech.com
651.646.0089

ANTI-BOVINE CXCL10

Biotinylated Polyclonal Antibody

Cross-reactivity: (ELISA)	Recombinant canine CXCL10	None
	Recombinant caprine CXCL10	Weak
	Recombinant cynomolgus CXCL10	None
	Recombinant dolphin CXCL10	Strong
	Recombinant equine CXCL10	Strong
	Recombinant feline CXCL10	Moderate
	Recombinant ferret CXCL10	Moderate
	Recombinant guinea pig CXCL10	Weak
	Recombinant human CXCL10	Weak
	Recombinant mouse CXCL10	Moderate
	Recombinant ovine CXCL10	Strong
	Recombinant rabbit CXCL10	None
	Recombinant rat CXCL10	None
Recombinant swine CXCL10	Moderate	

Warranty: Products are warranted by Kingfisher Biotech, Inc. to meet stated product specifications and to conform to label descriptions when used, handled and stored according to instructions. Unless otherwise stated, this warranty is limited to one year from date of sale or expiry date, whichever comes first. Kingfisher Biotech's sole liability for the product is limited to replacement of the product or refund of the purchase price. Kingfisher Biotech products are supplied for research applications. They are not intended for medicinal, diagnostic or therapeutic use. The products may not be resold, modified for resale or used to manufacture commercial products without prior written approval from Kingfisher Biotech, Inc.



Reagents for Animal Model and Animal Health Research

1000 Westgate Drive, St. Paul, MN 55114
Customer.Service@KingfisherBiotech.com
KingfisherBiotech.com
651.646.0089