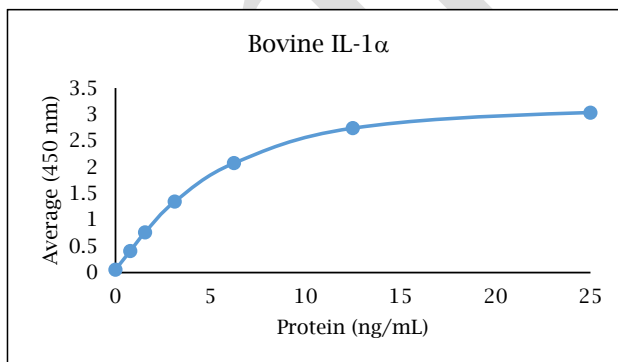


ANTI-BOVINE IL-1 α Biotinylated Polyclonal Antibody



Description:	Biotinylated anti-bovine IL-1 α polyclonal antibody
Catalog Number:	PBB0332B-050
Lot Number:	BZ6472LU
Quantity:	50 μ g
Concentration:	1.0 mg/mL
Volume:	50 μ L
Host:	Rabbit
Alias:	IL-1F1
Purification:	Bovine IL-1 α affinity chromatography
Immunogen:	Recombinant bovine IL-1 α
Molecular Weight:	17.1 kDa (calculated) for bovine IL-1 α
Formulation:	1X PBS buffer containing 0.09% NaN ₃
Stability and Storage:	Stable for up to twelve months from date of receipt at 2-8°C.
Country of Origin:	USA
Applications:	ELISA - 0.05-0.5 μ g/mL The recommended concentrations are approximate values. Optimal dilutions should be determined for each application.



Reagent

Capture Antibody
Standard Protein
Detection Antibody
SA-HRP
TMB

Information

2.5 μ g/mL for 12-24 hours
1 hour incubation
0.1 μ g/mL for 1 hour
Use as recommended.
3 minute incubation

Catalog Number

PB0331B-100
RP0097B-005
PBB0332B-050
AR0068-001
AR0133-002



Reagents for Animal Model and Animal Health Research

1000 Westgate Drive, St. Paul, MN 55114
Customer.Service@KingfisherBiotech.com
KingfisherBiotech.com
651.646.0089

ANTI-BOVINE IL-1 α

Biotinylated Polyclonal Antibody

Cross-reactivity: (ELISA)	Recombinant canine IL-1 α	Weak
	Recombinant dolphin IL-1 α	None
	Recombinant equine IL-1 α	Moderate
	Recombinant feline IL-1 α	Weak
	Recombinant rabbit IL-1 α	None

Warranty: Products are warranted by Kingfisher Biotech, Inc. to meet stated product specifications and to conform to label descriptions when used, handled and stored according to instructions. Unless otherwise stated, this warranty is limited to one year from date of sale or expiry date, whichever comes first. Kingfisher Biotech's sole liability for the product is limited to replacement of the product or refund of the purchase price. Kingfisher Biotech products are supplied for research applications. They are not intended for medicinal, diagnostic or therapeutic use. The products may not be resold, modified for resale or used to manufacture commercial products without prior written approval from Kingfisher Biotech, Inc.

EXAMPLE



Reagents for Animal Model and Animal Health Research

1000 Westgate Drive, St. Paul, MN 55114
Customer.Service@KingfisherBiotech.com
KingfisherBiotech.com
651.646.0089