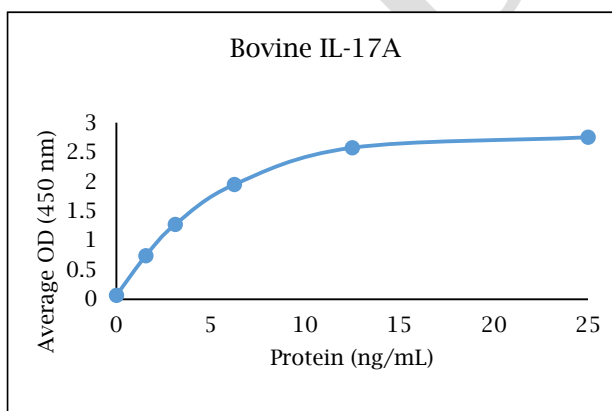


ANTI-BOVINE IL-17A

Biotinylated Polyclonal Antibody



- Description:** Biotinylated anti-bovine IL-17A polyclonal antibody
- Catalog Number:** PBB0277B-050
- Lot Number:** GZ6646BZ
- Quantity:** 50 µg
- Concentration:** 1.0 mg/mL
- Volume:** 50 µL
- Host:** Rabbit
- Purification:** Bovine IL-17A affinity chromatography
- Immunogen:** Recombinant bovine IL-17A
- Molecular Weight:** 17.4 kDa (calculated) for bovine IL-17A
- Formulation:** 1X PBS buffer containing 0.09% NaN₃
- Stability and Storage:** Stable for up to twelve months from date of receipt at 2-8°C.
- Country of Origin:** USA
- Applications:** ELISA - 0.01-0.5 µg/mL
- The recommended concentrations are approximate values. Optimal dilutions should be determined for each application.



<u>Reagent</u>	<u>Information</u>	<u>Catalog Number</u>
Capture Antibody	2.5 µg/mL for 12-24 hours	PB0274B-100
Standard Protein	1 hour incubation	RP0056B-005
Detection Antibody	0.1 µg/mL for 1 hour	PBB0277B-050
SA-HRP	Use as recommended.	AR0068-001
TMB	5 minute incubation	AR0133-002



Reagents for Animal Model and Animal Health Research

1000 Westgate Drive, St. Paul, MN 55114
Customer.Service@KingfisherBiotech.com
KingfisherBiotech.com
651.646.0089

ANTI-BOVINE IL-17A

Biotinylated Polyclonal Antibody

Cross-reactivity: (ELISA)	Recombinant canine IL-17A	Weak
	Recombinant caprine IL-17A	Moderate
	Recombinant cynomolgus IL-17A	Weak
	Recombinant dolphin IL-17A	Strong
	Recombinant equine IL-17A	None
	Recombinant feline IL-17A	Moderate
	Recombinant ferret IL-17A	Weak
	Recombinant guinea pig IL-17A	Weak
	Recombinant human IL-17A	Weak
	Recombinant mouse IL-17A	Weak
	Recombinant ovine IL-17A	Strong
	Recombinant rabbit IL-17A	Weak
Recombinant rat IL-17A	Weak	
Recombinant swine IL-17A	Strong	

Warranty: Products are warranted by Kingfisher Biotech, Inc. to meet stated product specifications and to conform to label descriptions when used, handled and stored according to instructions. Unless otherwise stated, this warranty is limited to one year from date of sale or expiry date, whichever comes first. Kingfisher Biotech's sole liability for the product is limited to replacement of the product or refund of the purchase price. Kingfisher Biotech products are supplied for research applications. They are not intended for medicinal, diagnostic or therapeutic use. The products may not be resold, modified for resale or used to manufacture commercial products without prior written approval from Kingfisher Biotech, Inc.



Reagents for Animal Model and Animal Health Research

1000 Westgate Drive, St. Paul, MN 55114
Customer.Service@KingfisherBiotech.com
KingfisherBiotech.com
651.646.0089