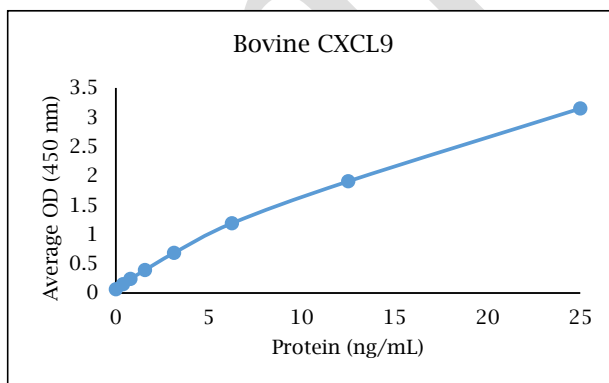


ANTI-BOVINE CXCL9

Biotinylated Polyclonal Antibody



- Description:** Biotinylated anti-bovine CXCL9 polyclonal antibody
- Catalog Number:** PBB0265B-050
- Lot Number:** GZ6641CW
- Quantity:** 50 µg
- Concentration:** 1.0 mg/mL
- Volume:** 50 µL
- Host:** Rabbit
- Alias:** MIG
- Purification:** Bovine CXCL9 affinity chromatography
- Immunogen:** Recombinant bovine CXCL9
- Molecular Weight:** 11.9 kDa (calculated) for bovine CXCL9
- Formulation:** 1X PBS buffer containing 0.09% NaN₃
- Stability and Storage:** Stable for up to twelve months from date of receipt at 2-8°C.
- Country of Origin:** USA
- Applications:** ELISA - 1-5 µg/mL
- The recommended concentrations are approximate values. Optimal dilutions should be determined for each application.



<u>Reagent</u>	<u>Information</u>	<u>Catalog Number</u>
Capture Antibody	2.5 µg/mL for 12-24 hours	PB0122B-100
Standard Protein	1 hour incubation	RP0025B-005
Detection Antibody	0.2 µg/mL for 1 hour	PBB0265B-050
SA-HRP	Use as recommended.	AR0068-001
TMB	15 minute incubation	AR0133-002

Reagents for Animal Model and Animal Health Research

1000 Westgate Drive, St. Paul, MN 55114
Customer.Service@KingfisherBiotech.com
KingfisherBiotech.com
651.646.0089

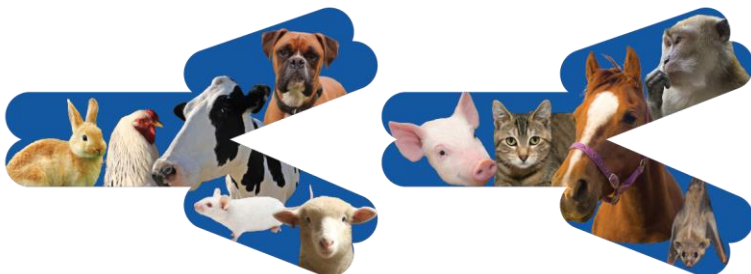


ANTI-BOVINE CXCL9

Biotinylated Polyclonal Antibody

Cross-reactivity: (ELISA)	Recombinant cynomolgus monkey CXCL9	None
	Recombinant equine CXCL9	None
	Recombinant feline CXCL9	None
	Recombinant ferret CXCL9	None
	Recombinant human CXCL9	None
	Recombinant mouse CXCL9	None
	Recombinant ovine CXCL9	Moderate
	Recombinant rabbit CXCL9	None
	Recombinant rat CXCL9	None
	Recombinant swine CXCL9	None

Warranty: Products are warranted by Kingfisher Biotech, Inc. to meet stated product specifications and to conform to label descriptions when used, handled and stored according to instructions. Unless otherwise stated, this warranty is limited to one year from date of sale or expiry date, whichever comes first. Kingfisher Biotech's sole liability for the product is limited to replacement of the product or refund of the purchase price. Kingfisher Biotech products are supplied for research applications. They are not intended for medicinal, diagnostic or therapeutic use. The products may not be resold, modified for resale or used to manufacture commercial products without prior written approval from Kingfisher Biotech, Inc.



Reagents for Animal Model and Animal Health Research

1000 Westgate Drive, St. Paul, MN 55114
Customer.Service@KingfisherBiotech.com
KingfisherBiotech.com
651.646.0089