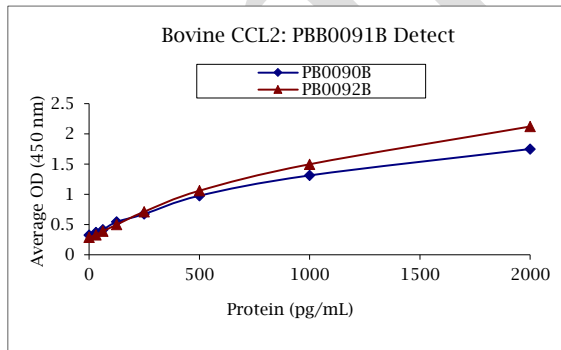


ANTI-BOVINE CCL2

Biotinylated Polyclonal Antibody



- Description:** Biotinylated anti-bovine CCL2 polyclonal antibody
- Catalog Number:** PBB0091B-050
- Lot Number:** FY6212EJ
- Quantity:** 50 µg
- Concentration:** 1.0 mg/mL
- Volume:** 50 µL
- Host:** Goat
- Alias:** MCP-1
- Purification:** Bovine CCL2 affinity chromatography
- Immunogen:** Recombinant bovine CCL2
- Molecular Weight:** 8.8 kDa (calculated) for bovine CCL2
- Formulation:** 1X PBS buffer containing 0.09% NaN₃
- Stability and Storage:** Stable for up to twelve months from date of receipt at 2-8°C.
- Country of Origin:** USA
- Applications:** ELISA - 0.05-0.5 µg/mL
The recommended concentrations are approximate values. Optimal dilutions should be determined for each application.



| Reagent | Information | Catalog Number |
|--------------------|---------------------------|----------------------------|
| Capture Antibody | 0.5 µg/mL for 12-24 hours | PB0090B-100 PB0092B-100 |
| Standard Protein | 2.5 hour incubation | RP0027B-005 |
| Detection Antibody | 0.1 µg/mL for 1 hour | PBB0091B-050 |
| SA-HRP | 1:240 dilution | AR0068-001 |
| TMB | 30 minute incubation | AR0133-002 |



Reagents for Animal Model and Animal Health Research

1000 Westgate Drive, St. Paul, MN 55114
 Customer.Service@KingfisherBiotech.com
 KingfisherBiotech.com
 651.646.0089

ANTI-BOVINE CCL2

Biotinylated Polyclonal Antibody

Cross-reactivity: Recombinant dolphin CCL2 Weak
(ELISA)

Warranty: Products are warranted by Kingfisher Biotech, Inc. to meet stated product specifications and to conform to label descriptions when used, handled and stored according to instructions. Unless otherwise stated, this warranty is limited to one year from date of sale or expiry date, whichever comes first. Kingfisher Biotech's sole liability for the product is limited to replacement of the product or refund of the purchase price. Kingfisher Biotech products are supplied for research applications. They are not intended for medicinal, diagnostic or therapeutic use. The products may not be resold, modified for resale or used to manufacture commercial products without prior written approval from Kingfisher Biotech, Inc.

EXAMPLE



Reagents for Animal Model and Animal Health Research

1000 Westgate Drive, St. Paul, MN 55114
Customer.Service@KingfisherBiotech.com
KingfisherBiotech.com
651.646.0089