

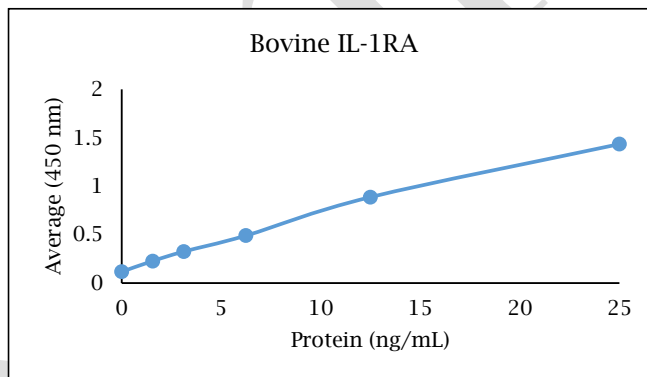
# ANTI-BOVINE IL-1RA

## Polyclonal Antibody



- Description:** Anti-bovine IL-1RA polyclonal antibody
- Catalog Number:** PB0476B-100
- Lot Number:** FT3816GM
- Quantity:** 100 µg
- Concentration:** 1.0 mg/mL
- Volume:** 100 µL
- Host:** Goat
- Alias:** IL-1F3
- Purification:** Bovine IL-1RA affinity chromatography
- Immunogen:** Recombinant bovine IL-1RA
- Molecular Weight:** 17.2 kDa (calculated) for bovine IL-1RA
- Formulation:** 1X PBS buffer containing 0.09% NaN<sub>3</sub>
- Stability and Storage:** Stable for up to twelve months from date of receipt at 2-8°C.
- Country of Origin:** USA
- Applications:** **Western blot** - 0.1-2 µg/mL  
**ELISA** - 1-5 µg/mL

The recommended concentrations are approximate values. Optimal dilutions should be determined for each application.



### Reagent

Capture Antibody  
Standard Protein  
Detection Antibody  
SA-HRP  
TMB

### Information

2.5 µg/mL for 12-24 hours  
1 hour incubation  
0.1 µg/mL for 1 hour  
Use as recommended.  
8 minute incubation

### Catalog Number

PB0476B-100  
RP0351B-005  
PBB0485B-050  
AR0068-001  
AR0133-002



## Reagents for Animal Model and Animal Health Research

1000 Westgate Drive, St. Paul, MN 55114  
Customer.Service@KingfisherBiotech.com  
KingfisherBiotech.com  
651.646.0089

# ANTI-BOVINE IL-1RA

## Polyclonal Antibody

<b>Cross-reactivity:</b> (ELISA)	Recombinant canine IL-1RA	None
	Recombinant equine IL-1RA	None
	Recombinant swine IL-1RA	Weak

**Warranty:** Products are warranted by Kingfisher Biotech, Inc. to meet stated product specifications and to conform to label descriptions when used, handled and stored according to instructions. Unless otherwise stated, this warranty is limited to one year from date of sale or expiry date, whichever comes first. Kingfisher Biotech's sole liability for the product is limited to replacement of the product or refund of the purchase price. Kingfisher Biotech products are supplied for research applications. They are not intended for medicinal, diagnostic or therapeutic use. The products may not be resold, modified for resale or used to manufacture commercial products without prior written approval from Kingfisher Biotech, Inc.

EXAMPLE



## Reagents for Animal Model and Animal Health Research

1000 Westgate Drive, St. Paul, MN 55114  
Customer.Service@KingfisherBiotech.com  
KingfisherBiotech.com  
651.646.0089