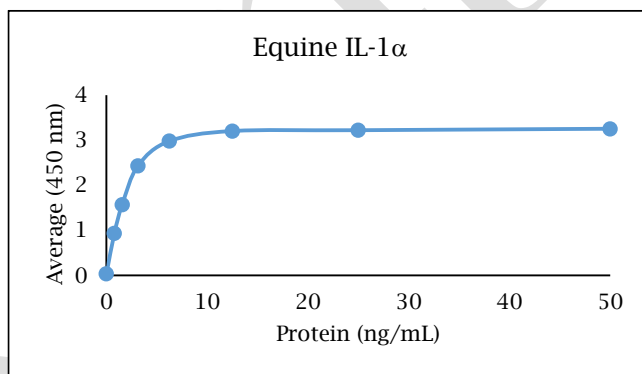


ANTI-EQUINE IL-1 α

Polyclonal Antibody



Description:	Anti-equine IL-1 α polyclonal antibody
Catalog Number:	PB0471E-100
Lot Number:	FZ6624IM
Quantity:	100 μ g
Concentration:	1.0 mg/mL
Volume:	100 μ L
Host:	Goat
Alias:	IL-1F1
Purification:	Equine IL-1 α affinity chromatography
Immunogen:	Recombinant equine IL-1 α
Molecular Weight:	18.1 kDa (calculated) for equine IL-1 α
Formulation:	1X PBS buffer containing 0.09% NaN ₃
Stability and Storage:	Stable for up to twelve months from date of receipt at 2-8°C.
Country of Origin:	USA
Applications:	Western blot - 0.1-2 μ g/mL ELISA - 1-5 μ g/mL



<u>Reagent</u>	<u>Information</u>	<u>Catalog Number</u>
Capture Antibody	2.5 μ g/mL for 12-24 hours	PB0471E-100
Standard Protein	1 hour incubation	RP0358E-005
Detection Antibody	0.1 μ g/mL for 1 hour	PBB0480E-050
SA-HRP	Use as recommended.	AR0068-001
TMB	3 minute incubation	AR0133-002

Reagents for Animal Model and Animal Health Research

1000 Westgate Drive, St. Paul, MN 55114
Customer.Service@KingfisherBiotech.com
KingfisherBiotech.com
651.646.0089



ANTI-EQUINE IL-1 α

Polyclonal Antibody

Cross-reactivity: (ELISA)	Recombinant bovine IL-1 α	Moderate
	Recombinant canine IL-1 α	Strong
	Recombinant dolphin IL-1 α	None
	Recombinant feline IL-1 α	Strong
	Recombinant mouse IL-1 α	None
	Recombinant rabbit IL-1 α	None

Warranty: Products are warranted by Kingfisher Biotech, Inc. to meet stated product specifications and to conform to label descriptions when used, handled and stored according to instructions. Unless otherwise stated, this warranty is limited to one year from date of sale or expiry date, whichever comes first. Kingfisher Biotech's sole liability for the product is limited to replacement of the product or refund of the purchase price. Kingfisher Biotech products are supplied for research applications. They are not intended for medicinal, diagnostic or therapeutic use. The products may not be resold, modified for resale or used to manufacture commercial products without prior written approval from Kingfisher Biotech, Inc.

EXAMPLE



Reagents for Animal Model and Animal Health Research

1000 Westgate Drive, St. Paul, MN 55114
Customer.Service@KingfisherBiotech.com
KingfisherBiotech.com
651.646.0089