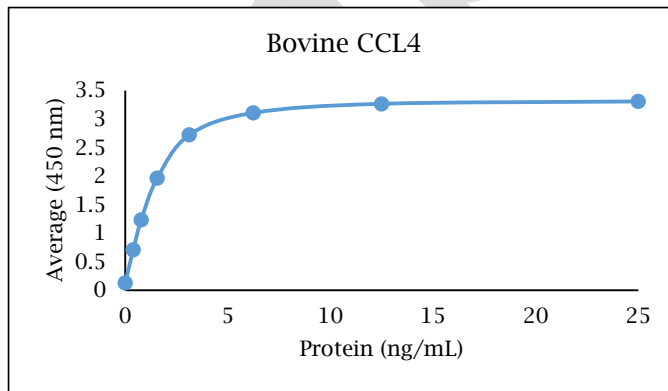


ANTI-BOVINE CCL4 Polyclonal Antibody



- Description:** Anti-bovine CCL4 polyclonal antibody
- Catalog Number:** PB0470B-100
- Lot Number:** HZ6666IM
- Quantity:** 100 µg
- Concentration:** 1.0 mg/mL
- Volume:** 100 µL
- Host:** Goat
- Alias:** MIP-1β
- Purification:** Bovine CCL4 affinity chromatography
- Immunogen:** Recombinant bovine CCL4
- Molecular Weight:** 7.8 kDa (calculated) for bovine CCL4
- Formulation:** 1X PBS buffer containing 0.09% NaN₃
- Stability and Storage:** Stable for up to twelve months from date of receipt at 2-8°C.
- Country of Origin:** USA
- Applications:** ELISA - 1-5 µg/mL
The recommended concentrations are approximate values. Optimal dilutions should be determined for each application.



<u>Reagent</u>	<u>Information</u>	<u>Catalog Number</u>
Capture Antibody	2.5 µg/mL for 12-24 hours	PB0470B-100
Standard Protein	1 hour incubation	RP0361B-005
Detection Antibody	0.1 µg/mL for 1 hour	PBB0479B-050
SA-HRP	Use as recommended.	AR0068-001
TMB	5 minute incubation	AR0133-002



Reagents for Animal Model and Animal Health Research

1000 Westgate Drive, St. Paul, MN 55114
Customer.Service@KingfisherBiotech.com
KingfisherBiotech.com
651.646.0089

ANTI-BOVINE CCL4

Polyclonal Antibody

Cross-reactivity: (ELISA)	Recombinant canine CCL4	Strong
	Recombinant chicken CCL4	None
	Recombinant dolphin CCL4	Weak
	Recombinant equine CCL4	Moderate
	Recombinant human CCL4	Moderate
	Recombinant mouse CCL4	None
	Recombinant rabbit CCL4	Strong
	Recombinant rat CCL4	Strong
Recombinant swine CCL4	Strong	

Warranty: Products are warranted by Kingfisher Biotech, Inc. to meet stated product specifications and to conform to label descriptions when used, handled and stored according to instructions. Unless otherwise stated, this warranty is limited to one year from date of sale or expiry date, whichever comes first. Kingfisher Biotech's sole liability for the product is limited to replacement of the product or refund of the purchase price. Kingfisher Biotech products are supplied for research applications. They are not intended for medicinal, diagnostic or therapeutic use. The products may not be resold, modified for resale or used to manufacture commercial products without prior written approval from Kingfisher Biotech, Inc.



Reagents for Animal Model and Animal Health Research

1000 Westgate Drive, St. Paul, MN 55114
Customer.Service@KingfisherBiotech.com
KingfisherBiotech.com
651.646.0089