

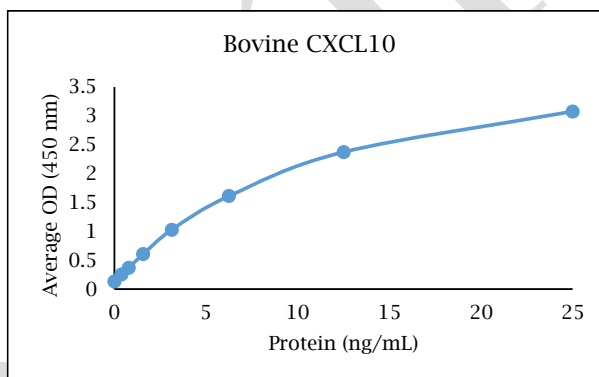
ANTI-BOVINE CXCL10

Polyclonal Antibody



- Description:** Anti-bovine CXCL10 polyclonal antibody
- Catalog Number:** PB0385B-100
- Lot Number:** FY6213CU
- Quantity:** 100 µg
- Concentration:** 1.0 mg/mL
- Volume:** 100 µL
- Host:** Rabbit
- Alias:** IP-10
- Purification:** Bovine CXCL10 affinity chromatography
- Immunogen:** Recombinant bovine CXCL10
- Molecular Weight:** 9.3 kDa (calculated) for bovine CXCL10
- Formulation:** 1X PBS buffer containing 0.09% NaN₃
- Stability and Storage:** Stable for up to twelve months from date of receipt at 2-8°C.
- Country of Origin:** USA
- Applications:** **Western Blot** - 0.1-2 µg/mL
ELISA - 1-5 µg/mL

The recommended concentrations are approximate values. Optimal dilutions should be determined for each application.



<u>Reagent</u>	<u>Information</u>	<u>Catalog Number</u>
Capture Antibody	2.5 µg/mL for 12-24 hours	PB0385B-100
Standard Protein	1 hour incubation	RP0079B-005
Detection Antibody	0.2 µg/mL for 1 hour	PBB0393B-050
SA-HRP	Use as recommended.	AR0068-001
TMB	30 minute incubation	AR0133-002

Reagents for Animal Model and Animal Health Research

1000 Westgate Drive, St. Paul, MN 55114
Customer.Service@KingfisherBiotech.com
KingfisherBiotech.com
651.646.0089



ANTI-BOVINE CXCL10

Polyclonal Antibody

Cross-reactivity: (ELISA)	Recombinant canine CXCL10	None
	Recombinant caprine CXCL10	Weak
	Recombinant cynomolgus CXCL10	None
	Recombinant dolphin CXCL10	Strong
	Recombinant equine CXCL10	Strong
	Recombinant feline CXCL10	Moderate
	Recombinant ferret CXCL10	Moderate
	Recombinant guinea pig CXCL10	Weak
	Recombinant human CXCL10	Weak
	Recombinant mouse CXCL10	Moderate
	Recombinant ovine CXCL10	Strong
	Recombinant rabbit CXCL10	None
Recombinant rat CXCL10	None	
Recombinant swine CXCL10	Moderate	

Warranty: Products are warranted by Kingfisher Biotech, Inc. to meet stated product specifications and to conform to label descriptions when used, handled and stored according to instructions. Unless otherwise stated, this warranty is limited to one year from date of sale or expiry date, whichever comes first. Kingfisher Biotech's sole liability for the product is limited to replacement of the product or refund of the purchase price. Kingfisher Biotech products are supplied for research applications. They are not intended for medicinal, diagnostic or therapeutic use. The products may not be resold, modified for resale or used to manufacture commercial products without prior written approval from Kingfisher Biotech, Inc.



Reagents for Animal Model and Animal Health Research

1000 Westgate Drive, St. Paul, MN 55114
Customer.Service@KingfisherBiotech.com
KingfisherBiotech.com
651.646.0089