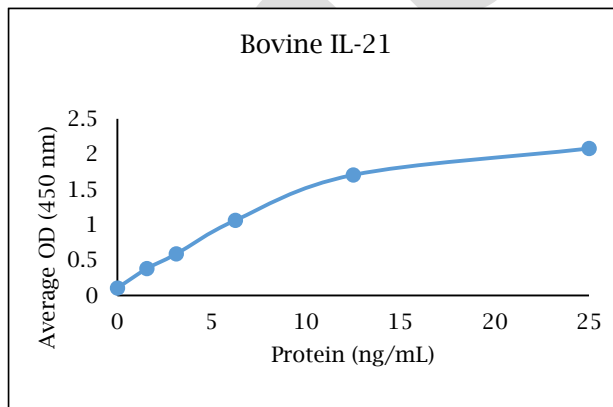


ANTI-BOVINE IL-21

Polyclonal Antibody



- Description:** Anti-bovine IL-21 polyclonal antibody
- Catalog Number:** PB0325B-100
- Lot Number:** BT3657AQ
- Quantity:** 100 µg
- Concentration:** 1.0 mg/mL
- Volume:** 100 µL
- Host:** Rabbit
- Purification:** Bovine IL-21 affinity chromatography
- Immunogen:** Recombinant bovine IL-21
- Molecular Weight:** 15.1 kDa (calculated) for bovine IL-21
- Formulation:** 1X PBS buffer containing 0.09% NaN₃
- Stability and Storage:** Stable for up to twelve months from date of receipt at 2-8°C.
- Country of Origin:** USA
- Applications:** **Western blot** - 0.1-2 µg/mL
ELISA - 1-5 µg/mL
- The recommended concentrations are approximate values. Optimal dilutions should be determined for each application.



Reagent

Capture Antibody
Standard Protein
Detection Antibody
SA-HRP
TMB

Information

2.5 µg/mL for 12-24 hours
1 hour incubation
0.1 µg/mL for 1 hour
Use as recommended.
30 minute incubation

Catalog Number

PB0325B-100
RP0074B-005
PBB0326B-050
AR0068-001
AR0133-002



Reagents for Animal Model and Animal Health Research

1000 Westgate Drive, St. Paul, MN 55114
Customer.Service@KingfisherBiotech.com
KingfisherBiotech.com
651.646.0089

ANTI-BOVINE IL-21

Polyclonal Antibody

Cross-reactivity: (ELISA)	Recombinant canine IL-21	None
	Recombinant chicken IL-21	None
	Recombinant ovine IL-21	Strong
	Recombinant swine IL-21	None

Warranty: Products are warranted by Kingfisher Biotech, Inc. to meet stated product specifications and to conform to label descriptions when used, handled and stored according to instructions. Unless otherwise stated, this warranty is limited to one year from date of sale or expiry date, whichever comes first. Kingfisher Biotech's sole liability for the product is limited to replacement of the product or refund of the purchase price. Kingfisher Biotech products are supplied for research applications. They are not intended for medicinal, diagnostic or therapeutic use. The products may not be resold, modified for resale or used to manufacture commercial products without prior written approval from Kingfisher Biotech, Inc.

EXAMPLE



Reagents for Animal Model and Animal Health Research

1000 Westgate Drive, St. Paul, MN 55114
Customer.Service@KingfisherBiotech.com
KingfisherBiotech.com
651.646.0089