

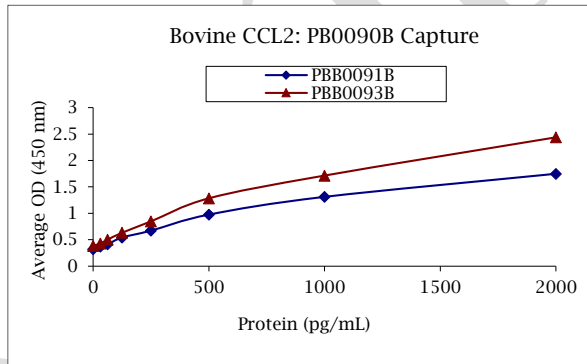
# ANTI-BOVINE CCL2

## Polyclonal Antibody



- Description:** Anti-bovine CCL2 polyclonal antibody
- Catalog Number:** PB0090B-100
- Lot Number:** KO1686EJ
- Quantity:** 100 µg
- Concentration:** 1.0 mg/mL
- Volume:** 100 µL
- Host:** Goat
- Alias:** MCP-1
- Purification:** Bovine CCL2 affinity chromatography
- Immunogen:** Recombinant bovine CCL2
- Molecular Weight:** 8.8 kDa (calculated) for bovine CCL2
- Formulation:** 1X PBS buffer containing 0.09% NaN<sub>3</sub>
- Stability and Storage:** Stable for up to twelve months from date of receipt at 2-8°C.
- Country of Origin:** USA
- Applications:** **Western blot** - 0.1-2 µg/mL  
**ELISA** - 0.5-5 µg/mL

The recommended concentrations are approximate values. Optimal dilutions should be determined for each application.



<u>Reagent</u>	<u>Information</u>	<u>Catalog Number</u>
Capture Antibody	0.5 µg/mL for 12-24 hours	PB0090B-100
Standard Protein	2.5 hour incubation	RP0027B-005
Detection Antibody	0.1 µg/mL for 1 hour	PBB0091B-050 PBB0093B-050
SA-HRP	1:240 dilution	AR0068-001
TMB	30 minute incubation	AR0133-002



## Reagents for Animal Model and Animal Health Research

1000 Westgate Drive, St. Paul, MN 55114  
Customer.Service@KingfisherBiotech.com  
KingfisherBiotech.com  
651.646.0089

# ANTI-BOVINE CCL2

## Polyclonal Antibody

**Cross-reactivity:** Recombinant dolphin CCL2 Weak  
(ELISA)

**Warranty:** Products are warranted by Kingfisher Biotech, Inc. to meet stated product specifications and to conform to label descriptions when used, handled and stored according to instructions. Unless otherwise stated, this warranty is limited to one year from date of sale or expiry date, whichever comes first. Kingfisher Biotech's sole liability for the product is limited to replacement of the product or refund of the purchase price. Kingfisher Biotech products are supplied for research applications. They are not intended for medicinal, diagnostic or therapeutic use. The products may not be resold, modified for resale or used to manufacture commercial products without prior written approval from Kingfisher Biotech, Inc.

EXAMPLE



## Reagents for Animal Model and Animal Health Research

1000 Westgate Drive, St. Paul, MN 55114  
Customer.Service@KingfisherBiotech.com  
KingfisherBiotech.com  
651.646.0089