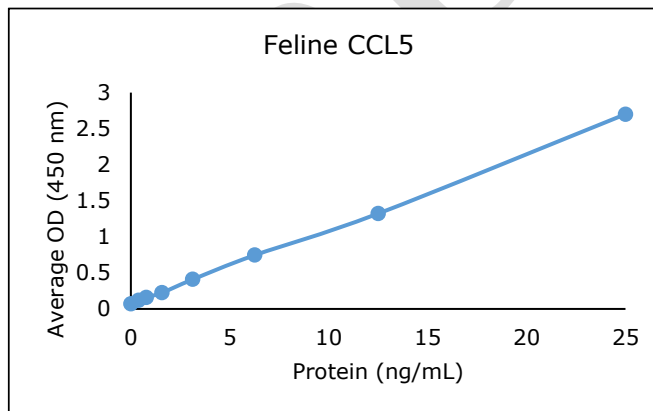


ANTI-FELINE CCL5

Biotinylated Polyclonal Antibody



- Description:** Biotinylated anti-feline CCL5 polyclonal antibody
- Catalog Number:** KPB2601F-050
- Lot Number:** LY6419LY
- Quantity:** 50 µg
- Concentration:** 1.0 mg/mL
- Volume:** 50 µL
- Host:** Rabbit
- Purification:** Feline CCL5 affinity chromatography
- Immunogen:** Recombinant feline CCL5
- Molecular Weight:** 7.9 kDa (calculated) for feline CCL5
- Formulation:** 1X PBS buffer containing 0.09% NaN₃
- Stability and Storage:** Stable for up to twelve months from date of receipt at 2-8°C.
- Country of Origin:** USA
- Applications:** ELISA - 0.1-0.5 µg/mL
- The recommended concentrations are approximate values. Optimal dilutions should be determined for each application.



Reagent

Capture Antibody
Standard Protein
Detection Antibody
SA-HRP
TMB

Information

2.5 µg/mL for 12-24 hours
1 hour incubation
0.2 µg/mL for 1 hour
Use as recommended.
11 minute incubation

Catalog Number

KP2600F-100
RP1530F-005
KPB2601F-050
AR0068-001
AR0133-002



Reagents for Animal Model and Animal Health Research

1000 Westgate Drive, St. Paul, MN 55114
Customer.Service@KingfisherBiotech.com
KingfisherBiotech.com
651.646.0089

ANTI-FELINE CCL5

Biotinylated Polyclonal Antibody

Cross-reactivity: (ELISA)	Recombinant bat CCL5	None
	Recombinant bovine CCL5	None
	Recombinant canine CCL5	None
	Recombinant chicken CCL5	None
	Recombinant cynomolgus monkey CCL5	None
	Recombinant dolphin CCL5	None
	Recombinant equine CCL5	None
	Recombinant feline CCL5	None
	Recombinant ferret/mink CCL5	None
	Recombinant guinea pig CCL5	None
	Recombinant hamster CCL5	None
	Recombinant human CCL5	None
	Recombinant mouse CCL5	None
	Recombinant ovine CCL5	None
	Recombinant rabbit CCL5	None
	Recombinant swine CCL5	None
Recombinant turkey CCL5	None	

Warranty: Products are warranted by Kingfisher Biotech, Inc. to meet stated product specifications and to conform to label descriptions when used, handled and stored according to instructions. Unless otherwise stated, this warranty is limited to one year from date of sale or expiry date, whichever comes first. Kingfisher Biotech's sole liability for the product is limited to replacement of the product or refund of the purchase price. Kingfisher Biotech products are supplied for research applications. They are not intended for medicinal, diagnostic or therapeutic use. The products may not be resold, modified for resale or used to manufacture commercial products without prior written approval from Kingfisher Biotech, Inc.



Reagents for Animal Model and Animal Health Research

1000 Westgate Drive, St. Paul, MN 55114
Customer.Service@KingfisherBiotech.com
KingfisherBiotech.com
651.646.0089