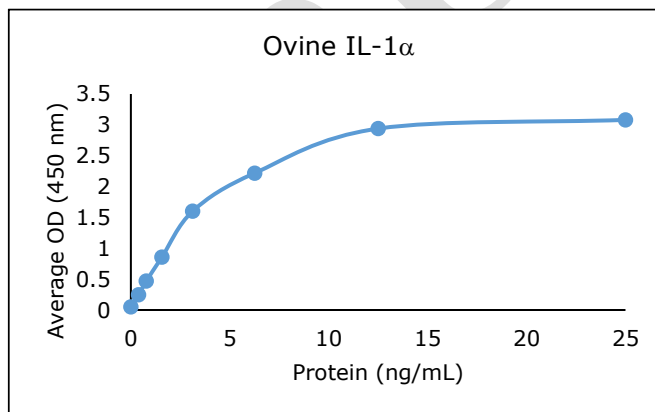


ANTI-OVINE IL-1 α

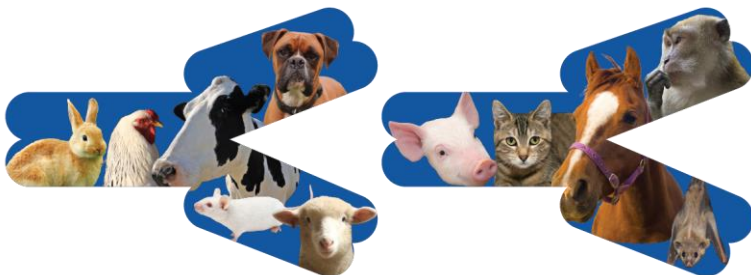
Biotinylated Polyclonal Antibody



- Description:** Biotinylated anti-ovine IL-1 α polyclonal antibody
- Catalog Number:** KPB2587V-050
- Lot Number:** KY6401KY
- Quantity:** 50 μ g
- Concentration:** 1.0 mg/mL
- Volume:** 50 μ L
- Host:** Rabbit
- Purification:** Ovine IL-1 α affinity chromatography
- Immunogen:** Recombinant ovine IL-1 α
- Molecular Weight:** 17.9 kDa (calculated) for ovine IL-1 α
- Formulation:** 1X PBS buffer containing 0.09% NaN₃
- Stability and Storage:** Stable for up to twelve months from date of receipt at 2-8°C.
- Country of Origin:** USA
- Applications:** ELISA - 0.1-0.5 μ g/mL
- The recommended concentrations are approximate values. Optimal dilutions should be determined for each application.



<u>Reagent</u>	<u>Information</u>	<u>Catalog Number</u>
Capture Antibody	2.5 μ g/mL for 12-24 hours	KP2586V-100
Standard Protein	1 hour incubation	RP1630V-005
Detection Antibody	0.2 μ g/mL for 1 hour	KPB2587V-050
SA-HRP	Use as recommended.	AR0068-001
TMB	3 minute incubation	AR0133-002



Reagents for Animal Model and Animal Health Research

1000 Westgate Drive, St. Paul, MN 55114
Customer.Service@KingfisherBiotech.com
KingfisherBiotech.com
651.646.0089

ANTI-OVINE IL-1 α

Biotinylated Polyclonal Antibody

Cross-reactivity: (ELISA)	Recombinant bovine IL-1 α	Strong
	Recombinant canine IL-1 α	None
	Recombinant caprine IL-1 α	Strong
	Recombinant cynomolgus monkey IL-1 α	None
	Recombinant dolphin IL-1 α	None
	Recombinant equine IL-1 α	Weak
	Recombinant ferret IL-1 α	None
	Recombinant feline IL-1 α	None
	Recombinant human IL-1 α	None
	Recombinant mink IL-1 α	None
	Recombinant mouse IL-1 α	None
	Recombinant rabbit IL-1 α	None
	Recombinant rat IL-1 α	None
Recombinant swine IL-1 α	Moderate	

Warranty: Products are warranted by Kingfisher Biotech, Inc. to meet stated product specifications and to conform to label descriptions when used, handled and stored according to instructions. Unless otherwise stated, this warranty is limited to one year from date of sale or expiry date, whichever comes first. Kingfisher Biotech's sole liability for the product is limited to replacement of the product or refund of the purchase price. Kingfisher Biotech products are supplied for research applications. They are not intended for medicinal, diagnostic or therapeutic use. The products may not be resold, modified for resale or used to manufacture commercial products without prior written approval from Kingfisher Biotech, Inc.



Reagents for Animal Model and Animal Health Research

1000 Westgate Drive, St. Paul, MN 55114
Customer.Service@KingfisherBiotech.com
KingfisherBiotech.com
651.646.0089