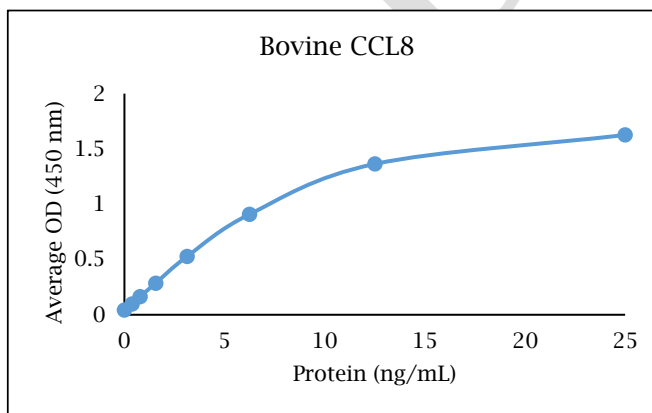


# ANTI-BOVINE CCL8

## Biotinylated Polyclonal Antibody



- Description:** Biotinylated anti-bovine CCL8 polyclonal antibody
- Catalog Number:** KPB2034B-050
- Lot Number:** IW5218HW
- Quantity:** 50 µg
- Concentration:** 1.0 mg/mL
- Volume:** 50 µL
- Host:** Rabbit
- Purification:** Bovine CCL8 affinity chromatography
- Immunogen:** Recombinant bovine CCL8
- Molecular Weight:** 8.6 kDa (calculated) for bovine CCL8
- Formulation:** 1X PBS buffer containing 0.09% NaN<sub>3</sub>
- Stability and Storage:** Stable for up to twelve months from date of receipt at 2-8°C.
- Country of Origin:** USA
- Applications:** ELISA - 0.1-0.5 µg/mL
- The recommended concentrations are approximate values. Optimal dilutions should be determined for each application.



### Reagent

Capture Antibody  
Standard Protein  
Detection Antibody  
SA-HRP  
TMB

### Information

2.5 µg/mL for 12-24 hours  
1 hour incubation  
0.2 µg/mL for 1 hour  
Use as recommended.  
5 minute incubation

### Catalog Number

KP2033B-100  
RP1903B-005  
KPB2034B-050  
AR0068-001  
AR0133-002



## Reagents for Animal Model and Animal Health Research

1000 Westgate Drive, St. Paul, MN 55114  
Customer.Service@KingfisherBiotech.com  
KingfisherBiotech.com  
651.646.0089

# ANTI-BOVINE CCL8

## Biotinylated Polyclonal Antibody

<b>Cross-reactivity:</b> (ELISA)	Recombinant bat CCL8	None
	Recombinant canine CCL8	None
	Recombinant cynomolgus monkey CCL8	None
	Recombinant equine CCL8	None
	Recombinant feline CCL8	None
	Recombinant ferret CCL8	None
	Recombinant swine CCL8	Moderate

**Warranty:** Products are warranted by Kingfisher Biotech, Inc. to meet stated product specifications and to conform to label descriptions when used, handled and stored according to instructions. Unless otherwise stated, this warranty is limited to one year from date of sale or expiry date, whichever comes first. Kingfisher Biotech's sole liability for the product is limited to replacement of the product or refund of the purchase price. Kingfisher Biotech products are supplied for research applications. They are not intended for medicinal, diagnostic or therapeutic use. The products may not be resold, modified for resale or used to manufacture commercial products without prior written approval from Kingfisher Biotech, Inc.



## Reagents for Animal Model and Animal Health Research

1000 Westgate Drive, St. Paul, MN 55114  
Customer.Service@KingfisherBiotech.com  
KingfisherBiotech.com  
651.646.0089