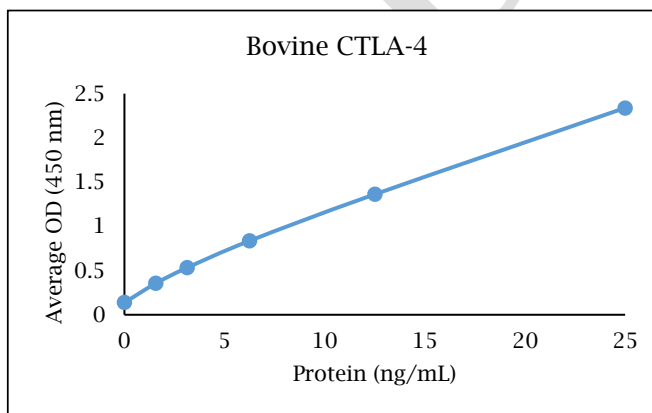


# ANTI-BOVINE CTLA-4

## Biotinylated Polyclonal Antibody



- Description:** Biotinylated anti-bovine CTLA-4 polyclonal antibody
- Catalog Number:** KPB1973B-050
- Lot Number:** DW5066CW
- Quantity:** 50 µg
- Concentration:** 1.0 mg/mL
- Volume:** 50 µL
- Host:** Rabbit
- Purification:** Bovine CTLA-4 affinity chromatography
- Immunogen:** Recombinant bovine CTLA-4
- Molecular Weight:** 13.8 kDa (calculated) for bovine CTLA-4
- Formulation:** 1X PBS buffer containing 0.09% NaN<sub>3</sub>
- Stability and Storage:** Stable for up to twelve months from date of receipt at 2-8°C.
- Country of Origin:** USA
- Applications:** ELISA - 0.1-0.5 µg/mL
- The recommended concentrations are approximate values. Optimal dilutions should be determined for each application.



### Reagent

Capture Antibody  
Standard Protein  
Detection Antibody  
SA-HRP  
TMB

### Information

2.5 µg/mL for 12-24 hours  
1 hour incubation  
0.4 µg/mL for 1 hour  
Use as recommended.  
12 minute incubation

### Catalog Number

KP1972B-100  
RP1411B-005  
KPB1973B-050  
AR0068-001  
AR0133-002



## Reagents for Animal Model and Animal Health Research

1000 Westgate Drive, St. Paul, MN 55114  
Customer.Service@KingfisherBiotech.com  
KingfisherBiotech.com  
651.646.0089

# ANTI-BOVINE CTLA-4

## Biotinylated Polyclonal Antibody

<b>Cross-reactivity:</b> (ELISA)	Recombinant cynomolgus CTLA-4	None
	Recombinant human CTLA-4	None
	Recombinant rabbit CTLA-4	None
	Recombinant swine CTLA-4	Weak

**Warranty:** Products are warranted by Kingfisher Biotech, Inc. to meet stated product specifications and to conform to label descriptions when used, handled and stored according to instructions. Unless otherwise stated, this warranty is limited to one year from date of sale or expiry date, whichever comes first. Kingfisher Biotech's sole liability for the product is limited to replacement of the product or refund of the purchase price. Kingfisher Biotech products are supplied for research applications. They are not intended for medicinal, diagnostic or therapeutic use. The products may not be resold, modified for resale or used to manufacture commercial products without prior written approval from Kingfisher Biotech, Inc.

EXAMPLE



## Reagents for Animal Model and Animal Health Research

1000 Westgate Drive, St. Paul, MN 55114  
Customer.Service@KingfisherBiotech.com  
KingfisherBiotech.com  
651.646.0089