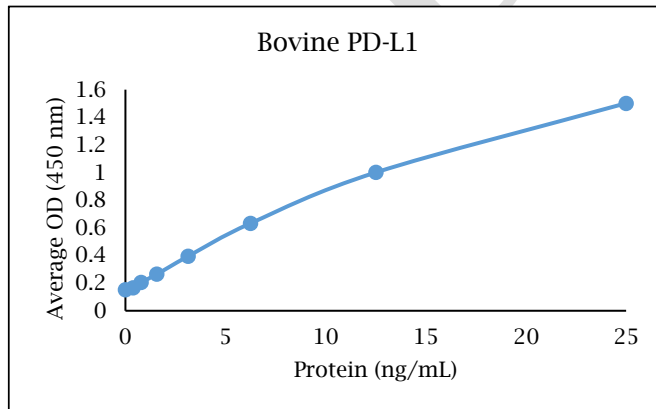


# ANTI-BOVINE PD-L1

## Biotinylated Polyclonal Antibody



- Description:** Biotinylated anti-bovine PD-L1 polyclonal antibody
- Catalog Number:** KPB1918B-050
- Lot Number:** KV4887JV
- Quantity:** 50 µg
- Concentration:** 1.0 mg/mL
- Volume:** 50 µL
- Host:** Rabbit
- Purification:** Bovine PD-L1 affinity chromatography
- Immunogen:** Recombinant bovine PD-L1
- Molecular Weight:** 25.1 kDa (calculated) for bovine PD-L1
- Formulation:** 1X PBS buffer containing 0.09% NaN<sub>3</sub>
- Stability and Storage:** Stable for up to twelve months from date of receipt at 2-8°C.
- Country of Origin:** USA
- Applications:** ELISA - 0.1-0.5 µg/mL  
The recommended concentrations are approximate values. Optimal dilutions should be determined for each application.



### Reagent

Capture Antibody  
Standard Protein  
Detection Antibody  
SA-HRP  
TMB

### Information

2.5 µg/mL for 12-24 hours  
1.5 hour incubation  
0.15 µg/mL for 1 hour  
Use as recommended.  
30 minute incubation

### Catalog Number

KP1917B-100  
RP1533B-005  
KPB1918B-050  
AR0068-001  
AR0133-002



## Reagents for Animal Model and Animal Health Research

1000 Westgate Drive, St. Paul, MN 55114  
Customer.Service@KingfisherBiotech.com  
KingfisherBiotech.com  
651.646.0089

# ANTI-BOVINE PD-L1

## Biotinylated Polyclonal Antibody

<b>Cross-reactivity:</b> (ELISA)	Recombinant canine PD-L1	None
	Recombinant feline PD-L1	Weak
	Recombinant rabbit PD-L1	None

**Warranty:** Products are warranted by Kingfisher Biotech, Inc. to meet stated product specifications and to conform to label descriptions when used, handled and stored according to instructions. Unless otherwise stated, this warranty is limited to one year from date of sale or expiry date, whichever comes first. Kingfisher Biotech's sole liability for the product is limited to replacement of the product or refund of the purchase price. Kingfisher Biotech products are supplied for research applications. They are not intended for medicinal, diagnostic or therapeutic use. The products may not be resold, modified for resale or used to manufacture commercial products without prior written approval from Kingfisher Biotech, Inc.

EXAMPLE



## Reagents for Animal Model and Animal Health Research

1000 Westgate Drive, St. Paul, MN 55114  
Customer.Service@KingfisherBiotech.com  
KingfisherBiotech.com  
651.646.0089