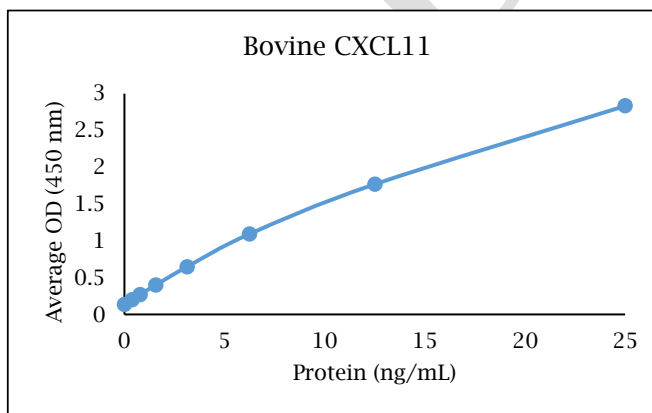


ANTI-BOVINE CXCL11

Biotinylated Polyclonal Antibody



- Description:** Biotinylated anti-bovine CXCL11 polyclonal antibody
- Catalog Number:** KPB1905B-050
- Lot Number:** JV4859JV
- Quantity:** 50 µg
- Concentration:** 1.0 mg/mL
- Volume:** 50 µL
- Host:** Rabbit
- Purification:** Bovine CXCL11 affinity chromatography
- Immunogen:** Recombinant bovine CXCL11
- Molecular Weight:** 8.8 kDa (calculated) for bovine CXCL11
- Formulation:** 1X PBS buffer containing 0.09% NaN₃
- Stability and Storage:** Stable for up to twelve months from date of receipt at 2-8°C.
- Country of Origin:** USA
- Applications:** ELISA - 0.1-0.5 µg/mL
The recommended concentrations are approximate values. Optimal dilutions should be determined for each application.



Reagent

Capture Antibody
Standard Protein
Detection Antibody
SA-HRP
TMB

Information

2.5 µg/mL for 12-24 hours
1 hour incubation
0.2 µg/mL for 1 hour
Use as recommended.
15 minute incubation

Catalog Number

KP1904B-100
RP0016B-005
KPB1905B-050
AR0068-001
AR0133-002



Reagents for Animal Model and Animal Health Research

1000 Westgate Drive, St. Paul, MN 55114
Customer.Service@KingfisherBiotech.com
KingfisherBiotech.com
651.646.0089

ANTI-BOVINE CXCL11

Biotinylated Polyclonal Antibody

Cross-reactivity: Recombinant mouse CXCL11 None
(ELISA) Recombinant swine CXCL11 Strong

Warranty: Products are warranted by Kingfisher Biotech, Inc. to meet stated product specifications and to conform to label descriptions when used, handled and stored according to instructions. Unless otherwise stated, this warranty is limited to one year from date of sale or expiry date, whichever comes first. Kingfisher Biotech's sole liability for the product is limited to replacement of the product or refund of the purchase price. Kingfisher Biotech products are supplied for research applications. They are not intended for medicinal, diagnostic or therapeutic use. The products may not be resold, modified for resale or used to manufacture commercial products without prior written approval from Kingfisher Biotech, Inc.

Example



Reagents for Animal Model and Animal Health Research

1000 Westgate Drive, St. Paul, MN 55114
Customer.Service@KingfisherBiotech.com
KingfisherBiotech.com
651.646.0089