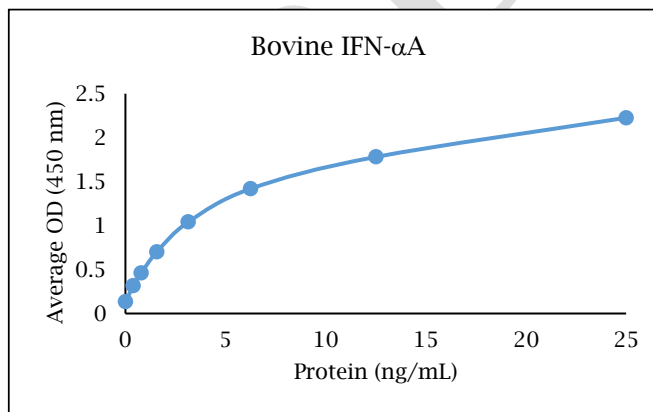


# ANTI-BOVINE IFN- $\alpha$ A

## Biotinylated Polyclonal Antibody



- Description:** Biotinylated anti-bovine IFN- $\alpha$ A polyclonal antibody
- Catalog Number:** KPB1841B-050
- Lot Number:** CZ6513BV
- Quantity:** 50  $\mu$ g
- Concentration:** 1.0 mg/mL
- Volume:** 50  $\mu$ L
- Host:** Rabbit
- Purification:** Bovine IFN- $\alpha$ A affinity chromatography
- Immunogen:** Recombinant bovine IFN- $\alpha$ A
- Molecular Weight:** 19.0 kDa (calculated) for bovine IFN- $\alpha$ A
- Formulation:** 1X PBS buffer containing 0.09% NaN<sub>3</sub>
- Stability and Storage:** Stable for up to twelve months from date of receipt at 2-8°C.
- Country of Origin:** USA
- Applications:** ELISA - 0.1-0.5  $\mu$ g/mL
- The recommended concentrations are approximate values. Optimal dilutions should be determined for each application.



<u>Reagent</u>	<u>Information</u>	<u>Catalog Number</u>
Capture Antibody	2.5 $\mu$ g/mL for 12-24 hours	KP1840B-100
Standard Protein	1 hour incubation	RP0008B-005
Detection Antibody	0.2 $\mu$ g/mL for 1 hour	KPB1841B-050
SA-HRP	Use as recommended.	AR0068-001
TMB	30 minute incubation	AR0133-002



## Reagents for Animal Model and Animal Health Research

1000 Westgate Drive, St. Paul, MN 55114  
Customer.Service@KingfisherBiotech.com  
KingfisherBiotech.com  
651.646.0089

# ANTI-BOVINE IFN- $\alpha$ A

## Biotinylated Polyclonal Antibody

<b>Cross-reactivity:</b> (ELISA)	Recombinant canine IFN- $\alpha$	None
	Recombinant caprine IFN- $\alpha$	Weak
	Recombinant chicken IFN- $\alpha$	None
	Recombinant equine IFN $\alpha$ 1	None
	Recombinant feline IFN- $\alpha$	None
	Recombinant human IFN- $\alpha$	None
	Recombinant mouse IFN- $\alpha$	None
	Recombinant ovine IFN- $\alpha$	Weak
	Recombinant swine IFN $\alpha$ 1	None

**Warranty:** Products are warranted by Kingfisher Biotech, Inc. to meet stated product specifications and to conform to label descriptions when used, handled and stored according to instructions. Unless otherwise stated, this warranty is limited to one year from date of sale or expiry date, whichever comes first. Kingfisher Biotech's sole liability for the product is limited to replacement of the product or refund of the purchase price. Kingfisher Biotech products are supplied for research applications. They are not intended for medicinal, diagnostic or therapeutic use. The products may not be resold, modified for resale or used to manufacture commercial products without prior written approval from Kingfisher Biotech, Inc.

EXAMPL



## Reagents for Animal Model and Animal Health Research

1000 Westgate Drive, St. Paul, MN 55114  
Customer.Service@KingfisherBiotech.com  
KingfisherBiotech.com  
651.646.0089