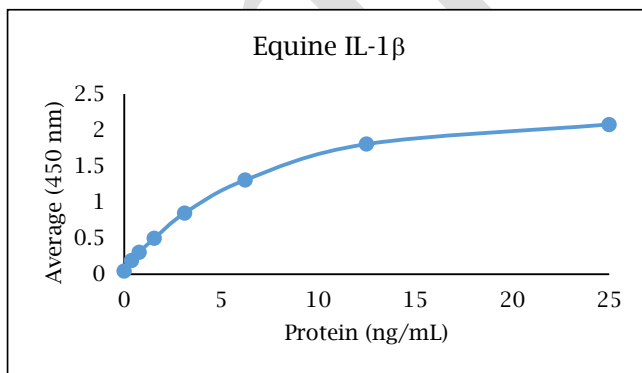


# ANTI-EQUINE IL-1 $\beta$

## Biotinylated Polyclonal Antibody



<b>Description:</b>	Biotinylated anti-equine IL-1 $\beta$ polyclonal antibody
<b>Catalog Number:</b>	KPB1014E-050
<b>Lot Number:</b>	FY6214DS
<b>Quantity:</b>	50 $\mu$ g
<b>Concentration:</b>	1.0 mg/mL
<b>Volume:</b>	50 $\mu$ L
<b>Host:</b>	Rabbit
<b>Alias:</b>	IL-1F2
<b>Purification:</b>	Equine IL-1 $\beta$ affinity chromatography
<b>Immunogen:</b>	Recombinant equine IL-1 $\beta$
<b>Molecular Weight:</b>	17.3 kDa (calculated) for equine IL-1 $\beta$
<b>Formulation:</b>	1X PBS buffer containing 0.09% NaN <sub>3</sub>
<b>Stability and Storage:</b>	Stable for up to twelve months from date of receipt at 2-8°C.
<b>Country of Origin:</b>	USA
<b>Applications:</b>	ELISA - 0.1-0.5 $\mu$ g/mL The recommended concentrations are approximate values. Optimal dilutions should be determined for each application.



<u>Reagent</u>	<u>Information</u>	<u>Catalog Number</u>
Capture Antibody	2.5 $\mu$ g/mL for 12-24 hours	KP1013E-100
Standard Protein	1 hour incubation	RP0060E-005
Detection Antibody	0.1 $\mu$ g/mL for 1 hour	KPB1014E-050
SA-HRP	Use as recommended.	AR0068-001
TMB	30 minute incubation	AR0133-002



## Reagents for Animal Model and Animal Health Research

1000 Westgate Drive, St. Paul, MN 55114  
Customer.Service@KingfisherBiotech.com  
KingfisherBiotech.com  
651.646.0089

# ANTI-EQUINE IL-1 $\beta$

## Biotinylated Polyclonal Antibody

<b>Cross-reactivity:</b> (ELISA)	Recombinant bovine IL-1 $\beta$	None
	Recombinant canine IL-1 $\beta$	None
	Recombinant dolphin IL-1 $\beta$	None
	Recombinant feline IL-1 $\beta$	None
	Recombinant guinea pig IL-1 $\beta$	None
	Recombinant human IL-1 $\beta$	None
	Recombinant mouse IL-1 $\beta$	None
	Recombinant ovine IL-1 $\beta$	None
	Recombinant rabbit IL-1 $\beta$	None
	Recombinant swine IL-1 $\beta$	None
Recombinant turkey IL-1 $\beta$	None	

**Warranty:** Products are warranted by Kingfisher Biotech, Inc. to meet stated product specifications and to conform to label descriptions when used, handled and stored according to instructions. Unless otherwise stated, this warranty is limited to one year from date of sale or expiry date, whichever comes first. Kingfisher Biotech's sole liability for the product is limited to replacement of the product or refund of the purchase price. Kingfisher Biotech products are supplied for research applications. They are not intended for medicinal, diagnostic or therapeutic use. The products may not be resold, modified for resale or used to manufacture commercial products without prior written approval from Kingfisher Biotech, Inc.



## Reagents for Animal Model and Animal Health Research

1000 Westgate Drive, St. Paul, MN 55114  
Customer.Service@KingfisherBiotech.com  
KingfisherBiotech.com  
651.646.0089