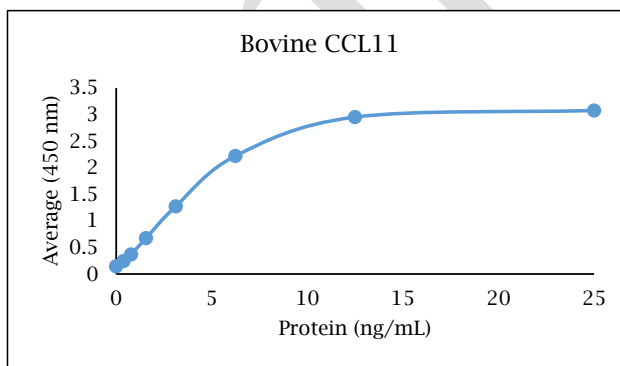


ANTI-BOVINE CCL11

Biotinylated Polyclonal Antibody



- Description:** Biotinylated anti-bovine CCL11 polyclonal antibody
- Catalog Number:** KPB0948B-050
- Lot Number:** FO1556DO
- Quantity:** 50 µg
- Concentration:** 1.0 mg/mL
- Volume:** 50 µL
- Host:** Chicken
- Alias:** Eotaxin-1
- Purification:** Bovine CCL11 affinity chromatography
- Immunogen:** Recombinant bovine CCL11
- Molecular Weight:** 8.6 kDa (calculated) for bovine CCL11
- Formulation:** 1X PBS buffer containing 0.09% NaN₃
- Stability and Storage:** Stable for up to twelve months from date of receipt at 2-8°C.
- Country of Origin:** USA
- Applications:** ELISA - 0.05-0.5 µg/mL
The recommended concentrations are approximate values. Optimal dilutions should be determined for each application.



<u>Reagent</u>	<u>Information</u>	<u>Catalog Number</u>
Capture Antibody	2.5 µg/mL for 12-24 hours	KP0947B-100
Standard Protein	1 hour incubation	RP0071B-005
Detection Antibody	0.1 µg/mL for 1 hour	KPB0948B-050
SA-HRP	Use as recommended.	AR0068-001
TMB	30 minute incubation	AR0133-002



Reagents for Animal Model and Animal Health Research

1000 Westgate Drive, St. Paul, MN 55114
Customer.Service@KingfisherBiotech.com
KingfisherBiotech.com
651.646.0089

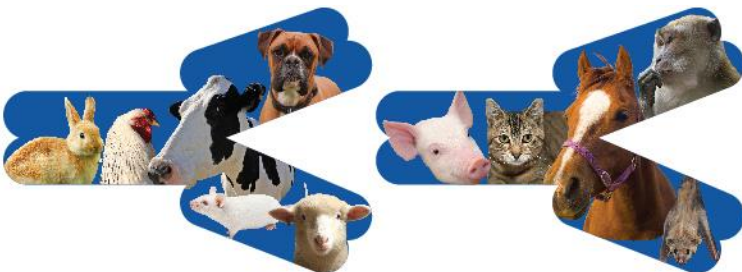
ANTI-BOVINE CCL11

Biotinylated Polyclonal Antibody

Cross-reactivity: Recombinant equine CCL11 Weak
(ELISA) Recombinant guinea pig CCL11 Weak

Warranty: Products are warranted by Kingfisher Biotech, Inc. to meet stated product specifications and to conform to label descriptions when used, handled and stored according to instructions. Unless otherwise stated, this warranty is limited to one year from date of sale or expiry date, whichever comes first. Kingfisher Biotech's sole liability for the product is limited to replacement of the product or refund of the purchase price. Kingfisher Biotech products are supplied for research applications. They are not intended for medicinal, diagnostic or therapeutic use. The products may not be resold, modified for resale or used to manufacture commercial products without prior written approval from Kingfisher Biotech, Inc.

EXAMPLE



Reagents for Animal Model and
Animal Health Research

1000 Westgate Drive, St. Paul, MN 55114
Customer.Service@KingfisherBiotech.com
KingfisherBiotech.com
651.646.0089