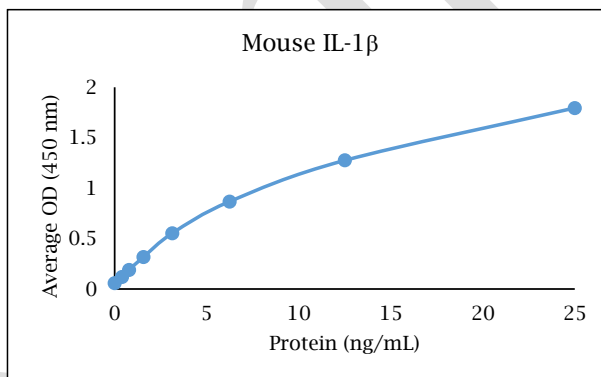


# ANTI-MOUSE IL-1 $\beta$

## Biotinylated Polyclonal Antibody



- Description:** Biotinylated anti-mouse IL-1 $\beta$  polyclonal antibody
- Catalog Number:** KPB0944M-050
- Lot Number:** FO1552AO
- Quantity:** 50  $\mu$ g
- Concentration:** 1.0 mg/mL
- Volume:** 50  $\mu$ L
- Host:** Rabbit
- Alias:** IL-1F2
- Purification:** Mouse IL-1 $\beta$  affinity chromatography
- Immunogen:** Recombinant mouse IL-1 $\beta$
- Molecular Weight:** 17.4 kDa (calculated) for mouse IL-1 $\beta$
- Formulation:** 1X PBS buffer containing 0.09% NaN<sub>3</sub>
- Stability and Storage:** Stable for up to twelve months from date of receipt at 2-8°C.
- Country of Origin:** USA
- Applications:** ELISA - 0.1-0.5  $\mu$ g/mL
- The recommended concentrations are approximate values. Optimal dilutions should be determined for each application.



| <u>Reagent</u>     | <u>Information</u>           | <u>Catalog Number</u> |
|--------------------|------------------------------|-----------------------|
| Capture Antibody   | 5 $\mu$ g/mL for 12-24 hours | KP0943M-100           |
| Standard Protein   | 1 hour incubation            | RP0359M-005           |
| Detection Antibody | 0.25 $\mu$ g/mL for 1 hour   | KPB0944M-050          |
| SA-HRP             | Use as recommended.          | AR0068-001            |
| TMB                | 30 minute incubation         | AR0133-002            |



## Reagents for Animal Model and Animal Health Research

1000 Westgate Drive, St. Paul, MN 55114  
Customer.Service@KingfisherBiotech.com  
KingfisherBiotech.com  
651.646.0089

# ANTI-MOUSE IL-1 $\beta$

## Biotinylated Polyclonal Antibody

|                                     |                                     |      |
|-------------------------------------|-------------------------------------|------|
| <b>Cross-reactivity:</b><br>(ELISA) | Recombinant bovine IL-1 $\beta$     | None |
|                                     | Recombinant canine IL-1 $\beta$     | None |
|                                     | Recombinant dolphin IL-1 $\beta$    | None |
|                                     | Recombinant equine IL-1 $\beta$     | None |
|                                     | Recombinant feline IL-1 $\beta$     | None |
|                                     | Recombinant guinea pig IL-1 $\beta$ | None |
|                                     | Recombinant human IL-1 $\beta$      | None |
|                                     | Recombinant ovine IL-1 $\beta$      | None |
|                                     | Recombinant rabbit IL-1 $\beta$     | None |
|                                     | Recombinant swine IL-1 $\beta$      | None |
| Recombinant turkey IL-1 $\beta$     | None                                |      |

**Warranty:** Products are warranted by Kingfisher Biotech, Inc. to meet stated product specifications and to conform to label descriptions when used, handled and stored according to instructions. Unless otherwise stated, this warranty is limited to one year from date of sale or expiry date, whichever comes first. Kingfisher Biotech's sole liability for the product is limited to replacement of the product or refund of the purchase price. Kingfisher Biotech products are supplied for research applications. They are not intended for medicinal, diagnostic or therapeutic use. The products may not be resold, modified for resale or used to manufacture commercial products without prior written approval from Kingfisher Biotech, Inc.



## Reagents for Animal Model and Animal Health Research

1000 Westgate Drive, St. Paul, MN 55114  
Customer.Service@KingfisherBiotech.com  
KingfisherBiotech.com  
651.646.0089