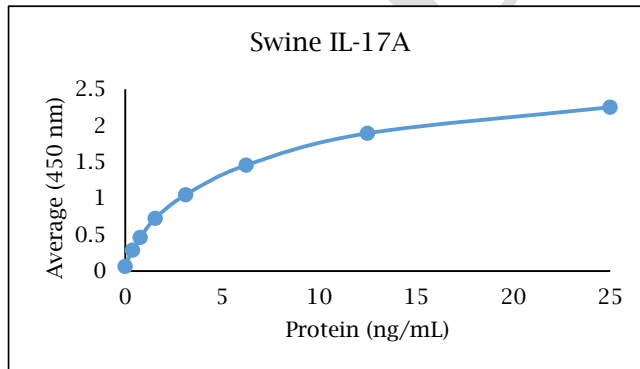


# ANTI-SWINE IL-17A

## Biotinylated Polyclonal Antibody



- Description:** Biotinylated anti-swine IL-17A polyclonal antibody
- Catalog Number:** KPB0651S-050
- Lot Number:** KV4906HV
- Quantity:** 50 µg
- Concentration:** 1.0 mg/mL
- Volume:** 50 µL
- Host:** Chicken
- Purification:** Swine IL-17A affinity chromatography
- Immunogen:** Recombinant swine IL-17A
- Molecular Weight:** 14.9 kDa (calculated) for swine IL-17A
- Formulation:** 1X PBS buffer containing 0.09% NaN<sub>3</sub>
- Stability and Storage:** Stable for up to twelve months from date of receipt at 2-8°C.
- Country of Origin:** USA
- Applications:** ELISA - 0.05-0.5 µg/mL
- The recommended concentrations are approximate values. Optimal dilutions should be determined for each application.



<u>Reagent</u>	<u>Information</u>	<u>Catalog Number</u>
Capture Antibody	2.5 µg/mL for 12-24 hours	KP0650S-100
Standard Protein	1.5 hour incubation	RP0128S-005
Detection Antibody	0.1 µg/mL for 1 hour	KPB0651S-050
SA-HRP	Use as recommended.	AR0068-001
TMB	5 minute incubation	AR0133-002



## Reagents for Animal Model and Animal Health Research

1000 Westgate Drive, St. Paul, MN 55114  
Customer.Service@KingfisherBiotech.com  
KingfisherBiotech.com  
651.646.0089

# ANTI-SWINE IL-17A

## Biotinylated Polyclonal Antibody

<b>Cross-reactivity:</b> (ELISA)	Recombinant bovine IL-17A	Moderate
	Recombinant canine IL-17A	Weak
	Recombinant equine IL-17A	Weak
	Recombinant human IL-17A	Weak
	Recombinant mouse IL-17A	None
	Recombinant ovine IL-17A	Moderate
	Recombinant rabbit IL-17A	Weak
	Recombinant rat IL-17A	Weak

**Warranty:** Products are warranted by Kingfisher Biotech, Inc. to meet stated product specifications and to conform to label descriptions when used, handled and stored according to instructions. Unless otherwise stated, this warranty is limited to one year from date of sale or expiry date, whichever comes first. Kingfisher Biotech's sole liability for the product is limited to replacement of the product or refund of the purchase price. Kingfisher Biotech products are supplied for research applications. They are not intended for medicinal, diagnostic or therapeutic use. The products may not be resold, modified for resale or used to manufacture commercial products without prior written approval from Kingfisher Biotech, Inc.



## Reagents for Animal Model and Animal Health Research

1000 Westgate Drive, St. Paul, MN 55114  
Customer.Service@KingfisherBiotech.com  
KingfisherBiotech.com  
651.646.0089