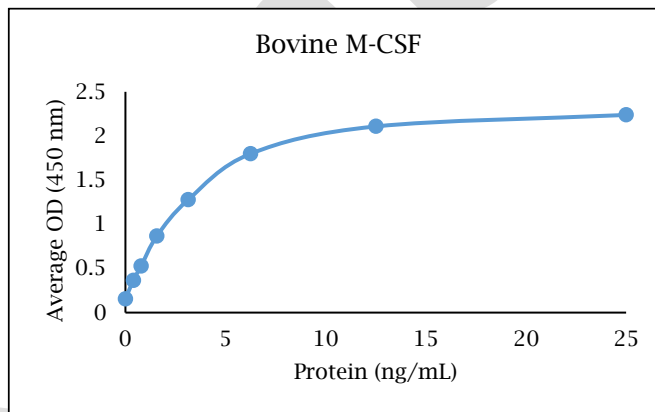


ANTI-BOVINE M-CSF Polyclonal Antibody



- Description:** Anti-bovine M-CSF polyclonal antibody
- Catalog Number:** KP2197B-100
- Lot Number:** KX5795CX
- Quantity:** 100 µg
- Concentration:** 1.0 mg/mL
- Volume:** 100 µL
- Host:** Rabbit
- Purification:** Bovine M-CSF affinity chromatography
- Immunogen:** Recombinant bovine M-CSF
- Molecular Weight:** 25.1 kDa (calculated) for bovine M-CSF
- Formulation:** 1X PBS buffer containing 0.09% NaN₃
- Stability and Storage:** Stable for up to twelve months from date of receipt at 2-8°C.
- Country of Origin:** USA
- Applications:** **Western blot** - 0.1-2 µg/mL
ELISA - 1-5 µg/mL

The recommended concentrations are approximate values. Optimal dilutions should be determined for each application.



<u>Reagent</u>	<u>Information</u>	<u>Catalog Number</u>
Capture Antibody	2.5 µg/mL for 12-24 hours	KP2197B-100
Standard Protein	1 hour incubation	RP1353B-005
Detection Antibody	0.2 µg/mL for 1 hour	KPB2198B-050
SA-HRP	Use as recommended.	AR0068-001
TMB	4 minute incubation	AR0133-002



Reagents for Animal Model and Animal Health Research

1000 Westgate Drive, St. Paul, MN 55114
Customer.Service@KingfisherBiotech.com
KingfisherBiotech.com
651.646.0089

ANTI-BOVINE M-CSF

Polyclonal Antibody

Cross-reactivity: (ELISA)	Recombinant bat M-CSF	None
	Recombinant canine M-CSF	Weak
	Recombinant caprine M-CSF	Strong
	Recombinant chicken M-CSF	None
	Recombinant cynomolgus M-CSF	Weak
	Recombinant feline M-CSF	Weak
	Recombinant guinea pig M-CSF	None
	Recombinant human M-CSF	Weak
	Recombinant mouse M-CSF	Weak
	Recombinant rabbit M-CSF	None
Recombinant zebra finch M-CSF	None	

Warranty: Products are warranted by Kingfisher Biotech, Inc. to meet stated product specifications and to conform to label descriptions when used, handled and stored according to instructions. Unless otherwise stated, this warranty is limited to one year from date of sale or expiry date, whichever comes first. Kingfisher Biotech's sole liability for the product is limited to replacement of the product or refund of the purchase price. Kingfisher Biotech products are supplied for research applications. They are not intended for medicinal, diagnostic or therapeutic use. The products may not be resold, modified for resale or used to manufacture commercial products without prior written approval from Kingfisher Biotech, Inc.



Reagents for Animal Model and Animal Health Research

1000 Westgate Drive, St. Paul, MN 55114
Customer.Service@KingfisherBiotech.com
KingfisherBiotech.com
651.646.0089