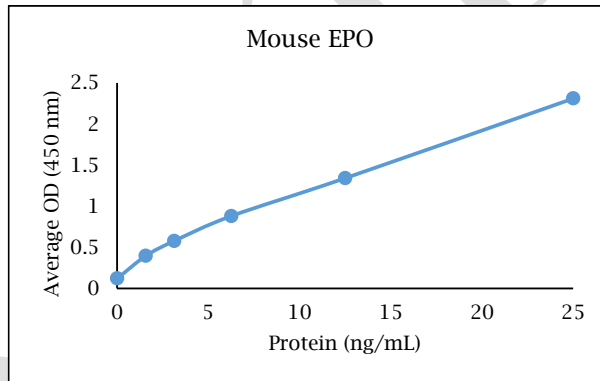


ANTI-MOUSE EPO

Polyclonal Antibody



Description:	Anti-mouse EPO polyclonal antibody
Catalog Number:	KP2145M-100
Lot Number:	EX5576CX
Quantity:	100 µg
Concentration:	1.0 mg/mL
Volume:	100 µL
Host:	Rabbit
Alias:	Erythropoietin
Purification:	Mouse EPO affinity chromatography
Immunogen:	Recombinant mouse EPO
Molecular Weight:	18.5 kDa (calculated) for mouse EPO
Formulation:	1X PBS buffer containing 0.09% NaN ₃
Stability and Storage:	Stable for up to twelve months from date of receipt at 2-8°C.
Country of Origin:	USA
Applications:	Western blot - 0.1-2 µg/mL ELISA - 1-5 µg/mL



Reagent	Information	Catalog Number
Capture Antibody	2.5 µg/mL for 12-24 hours	KP2145M-100
Standard Protein	1 hour incubation	RP1299M-005
Detection Antibody	0.4 µg/mL for 1 hour	KPB2146M-050
SA-HRP	Use as recommended.	AR0068-001
TMB	15 minute incubation	AR0133-002

Reagents for Animal Model and Animal Health Research

1000 Westgate Drive, St. Paul, MN 55114
Customer.Service@KingfisherBiotech.com
KingfisherBiotech.com
651.646.0089



ANTI-MOUSE EPO

Polyclonal Antibody

Cross-reactivity: (ELISA)	Recombinant bovine EPO	Weak
	Recombinant canine EPO	Weak
	Recombinant equine EPO	Weak
	Recombinant feline EPO	Weak
	Recombinant rabbit EPO	Weak
	Recombinant rat EPO	Moderate
	Recombinant swine EPO	Weak

Warranty: Products are warranted by Kingfisher Biotech, Inc. to meet stated product specifications and to conform to label descriptions when used, handled and stored according to instructions. Unless otherwise stated, this warranty is limited to one year from date of sale or expiry date, whichever comes first. Kingfisher Biotech's sole liability for the product is limited to replacement of the product or refund of the purchase price. Kingfisher Biotech products are supplied for research applications. They are not intended for medicinal, diagnostic or therapeutic use. The products may not be resold, modified for resale or used to manufacture commercial products without prior written approval from Kingfisher Biotech, Inc.

EXAMPLE



Reagents for Animal Model and Animal Health Research

1000 Westgate Drive, St. Paul, MN 55114
Customer.Service@KingfisherBiotech.com
KingfisherBiotech.com
651.646.0089