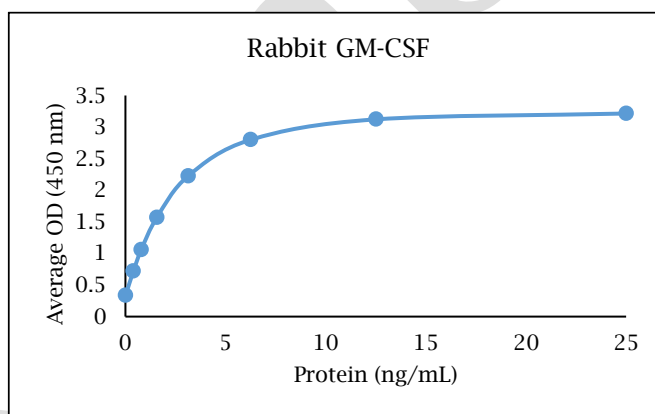


ANTI-RABBIT GM-CSF

Polyclonal Antibody



- Description:** Anti-rabbit GM-CSF polyclonal antibody
- Catalog Number:** KP1736U-100
- Lot Number:** GU4271FU
- Quantity:** 100 µg
- Concentration:** 1.0 mg/mL
- Volume:** 100 µL
- Host:** Chicken
- Purification:** Rabbit GM-CSF affinity chromatography
- Immunogen:** Recombinant rabbit GM-CSF
- Molecular Weight:** 14.4 kDa (calculated) for rabbit GM-CSF
- Formulation:** 1X PBS buffer containing 0.09% NaN₃
- Stability and Storage:** Stable for up to twelve months from date of receipt at 2-8°C.
- Country of Origin:** USA
- Applications:** **Western blot** - 0.1-2 µg/mL
ELISA - 1-5 µg/mL



<u>Reagent</u>	<u>Information</u>	<u>Catalog Number</u>
Capture Antibody	2.5 µg/mL for 12-24 hours	KP1736U-100
Standard Protein	1 hour incubation	RP0977U-005
Detection Antibody	0.4 µg/mL for 1 hour	KPB1737U-050
SA-HRP	Use as recommended.	AR0068-001
TMB	15 minute incubation	AR0133-002



Reagents for Animal Model and Animal Health Research

1000 Westgate Drive, St. Paul, MN 55114
Customer.Service@KingfisherBiotech.com
KingfisherBiotech.com
651.646.0089

ANTI-RABBIT GM-CSF

Polyclonal Antibody

Cross-reactivity: (ELISA)	Recombinant bovine GM-CSF	None
	Recombinant canine GM-CSF	None
	Recombinant caprine GM-CSF	None
	Recombinant chicken GM-CSF	None
	Recombinant cynomolgus monkey GM-CSF	Moderate
	Recombinant equine GM-CSF	None
	Recombinant feline GM-CSF	None
	Recombinant human GM-CSF	Moderate
	Recombinant mouse GM-CSF	None
	Recombinant ovine GM-CSF	None
	Recombinant rat GM-CSF	None
Recombinant swine GM-CSF	None	

Warranty: Products are warranted by Kingfisher Biotech, Inc. to meet stated product specifications and to conform to label descriptions when used, handled and stored according to instructions. Unless otherwise stated, this warranty is limited to one year from date of sale or expiry date, whichever comes first. Kingfisher Biotech's sole liability for the product is limited to replacement of the product or refund of the purchase price. Kingfisher Biotech products are supplied for research applications. They are not intended for medicinal, diagnostic or therapeutic use. The products may not be resold, modified for resale or used to manufacture commercial products without prior written approval from Kingfisher Biotech, Inc.



Reagents for Animal Model and Animal Health Research

1000 Westgate Drive, St. Paul, MN 55114
Customer.Service@KingfisherBiotech.com
KingfisherBiotech.com
651.646.0089