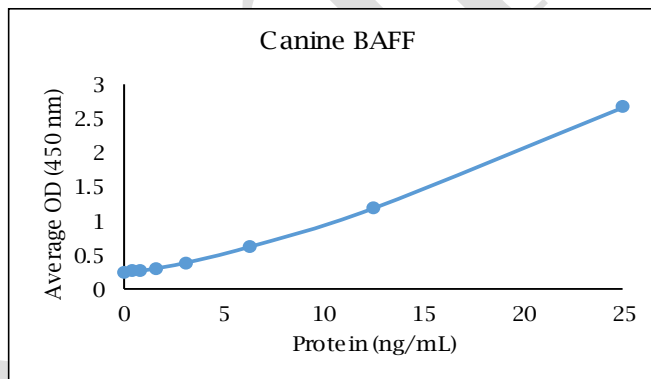


ANTI-CANINE BAFF

Polyclonal Antibody



Description:	Anti-canine BAFF polyclonal antibody
Catalog Number:	KP1694D-100
Lot Number:	LT4048LT
Quantity:	100 µg
Concentration:	1.0 mg/mL
Volume:	100 µL
Host:	Rabbit
Alias:	TNFSF13B
Purification:	Canine BAFF affinity chromatography
Immunogen:	Recombinant canine BAFF
Molecular Weight:	17.1 kDa (calculated) for canine BAFF
Formulation:	1X PBS buffer containing 0.09% NaN ₃
Stability and Storage:	Stable for up to twelve months from date of receipt at 2-8°C.
Country of Origin:	USA
Applications:	Western blot - 0.1-2 µg/mL ELISA - 0.5-5 µg/mL



<u>Reagent</u>	<u>Information</u>	<u>Catalog Number</u>
Capture Antibody	2.5 µg/mL for 12-24 hours	KP1694D-100
Standard Protein	1 hour incubation	RP0465D-005
Detection Antibody	0.4 µg/mL for 1 hour	KPB1695D-050
SA-HRP	Use as recommended.	AR0068-001
TMB	30 minute incubation	AR0133-002



Reagents for Animal Model and Animal Health Research

1000 Westgate Drive, St. Paul, MN 55114
Customer.Service@KingfisherBiotech.com
KingfisherBiotech.com
651.646.0089

ANTI-CANINE BAFF

Polyclonal Antibody

Cross-reactivity: (ELISA)	Recombinant bovine BAFF	None
	Recombinant chicken BAFF	None
	Recombinant equine BAFF	None
	Recombinant feline BAFF	None
	Recombinant mouse BAFF	Moderate
	Recombinant ovine BAFF	None
	Recombinant rabbit BAFF	None
	Recombinant swine BAFF	None

Warranty: Products are warranted by Kingfisher Biotech, Inc. to meet stated product specifications and to conform to label descriptions when used, handled and stored according to instructions. Unless otherwise stated, this warranty is limited to one year from date of sale or expiry date, whichever comes first. Kingfisher Biotech's sole liability for the product is limited to replacement of the product or refund of the purchase price. Kingfisher Biotech products are supplied for research applications. They are not intended for medicinal, diagnostic or therapeutic use. The products may not be resold, modified for resale or used to manufacture commercial products without prior written approval from Kingfisher Biotech, Inc.



Reagents for Animal Model and Animal Health Research

1000 Westgate Drive, St. Paul, MN 55114
Customer.Service@KingfisherBiotech.com
KingfisherBiotech.com
651.646.0089