

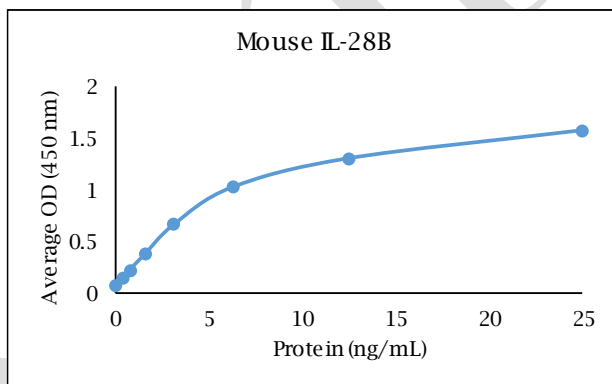
ANTI-MOUSE IL-28B

Polyclonal Antibody



Description:	Anti-mouse IL-28B polyclonal antibody
Catalog Number:	KP1620M-100
Lot Number:	DT3721CT
Quantity:	100 µg
Concentration:	1.0 mg/mL
Volume:	100 µL
Host:	Rabbit
Alias:	IFN-λ
Purification:	Mouse IL-28B affinity chromatography
Immunogen:	Recombinant mouse IL-28B
Molecular Weight:	19.6 kDa (calculated) for mouse IL-28B
Formulation:	1X PBS buffer containing 0.09% NaN ₃
Stability and Storage:	Stable for up to twelve months from date of receipt at 2-8°C.
Country of Origin:	USA
Applications:	Western blot - 0.1-2 µg/mL ELISA - 1-5 µg/mL

The recommended concentrations are approximate values. Optimal dilutions should be determined for each application.



<u>Reagent</u>	<u>Information</u>	<u>Catalog Number</u>
Capture Antibody	2.5 µg/mL for 12-24 hours	KP1620M-100
Standard Protein	1 hour incubation	RP1339M-005
Detection Antibody	0.2 µg/mL for 1 hour	KPB1621M-050
SA-HRP	Use as recommended.	AR0068-001
TMB	2 minute incubation	AR0133-002



Reagents for Animal Model and Animal Health Research

1000 Westgate Drive, St. Paul, MN 55114
Customer.Service@KingfisherBiotech.com
KingfisherBiotech.com
651.646.0089

ANTI-MOUSE IL-28B

Polyclonal Antibody

Cross-reactivity: Recombinant equine IL-28B None
(ELISA) Recombinant swine IL-28B None

Warranty: Products are warranted by Kingfisher Biotech, Inc. to meet stated product specifications and to conform to label descriptions when used, handled and stored according to instructions. Unless otherwise stated, this warranty is limited to one year from date of sale or expiry date, whichever comes first. Kingfisher Biotech's sole liability for the product is limited to replacement of the product or refund of the purchase price. Kingfisher Biotech products are supplied for research applications. They are not intended for medicinal, diagnostic or therapeutic use. The products may not be resold, modified for resale or used to manufacture commercial products without prior written approval from Kingfisher Biotech, Inc.

EXAMPLE



Reagents for Animal Model and Animal Health Research

1000 Westgate Drive, St. Paul, MN 55114
Customer.Service@KingfisherBiotech.com
KingfisherBiotech.com
651.646.0089