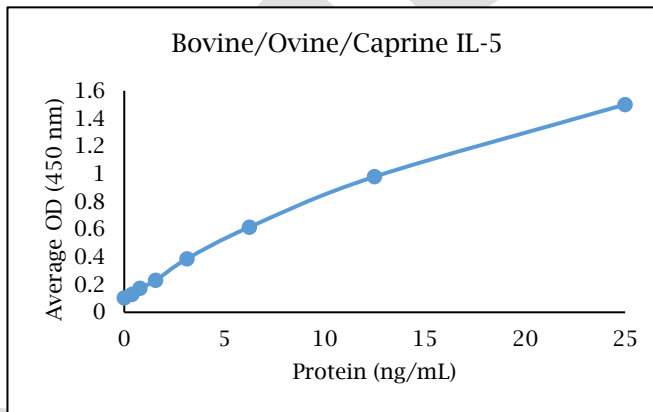


# ANTI-BOVINE/OVINE/CAPRINE IL-5 Polyclonal Antibody



- Description:** Anti-bovine/ovine/caprine IL-5 polyclonal antibody
- Catalog Number:** KP1617B-100
- Lot Number:** DT3719DT
- Quantity:** 100 µg
- Concentration:** 1.0 mg/mL
- Volume:** 100 µL
- Host:** Rabbit
- Purification:** Bovine/Ovine/Caprine IL-5 affinity chromatography
- Immunogen:** Recombinant bovine/ovine/caprine IL-5
- Molecular Weight:** 13.0 kDa (calculated) for bovine/ovine/caprine IL-5
- Formulation:** 1X PBS buffer containing 0.09% NaN<sub>3</sub>
- Stability and Storage:** Stable for up to twelve months from date of receipt at 2-8°C.
- Country of Origin:** USA
- Applications:** **Western blot** - 0.1-2 µg/mL  
**ELISA** - 1-5 µg/mL
- The recommended concentrations are approximate values. Optimal dilutions should be determined for each application.



<u>Reagent</u>	<u>Information</u>	<u>Catalog Number</u>
Capture Antibody	2.5 µg/mL for 12-24 hours	KP1617B-100
Standard Protein	1 hour incubation	RP0139B-005
Detection Antibody	0.2 µg/mL for 1 hour	KPB1618B-050
SA-HRP	Use as recommended.	AR0068-001
TMB	7 minute incubation	AR0133-002



## Reagents for Animal Model and Animal Health Research

1000 Westgate Drive, St. Paul, MN 55114  
Customer.Service@KingfisherBiotech.com  
KingfisherBiotech.com  
651.646.0089

# ANTI-BOVINE/OVINE/CAPRINE IL-5 Polyclonal Antibody

<b>Cross-reactivity:</b> (ELISA)	Recombinant canine IL-5	None
	Recombinant equine IL-5	None
	Recombinant feline IL-5	None
	Recombinant rabbit IL-5	None

**Warranty:** Products are warranted by Kingfisher Biotech, Inc. to meet stated product specifications and to conform to label descriptions when used, handled and stored according to instructions. Unless otherwise stated, this warranty is limited to one year from date of sale or expiry date, whichever comes first. Kingfisher Biotech's sole liability for the product is limited to replacement of the product or refund of the purchase price. Kingfisher Biotech products are supplied for research applications. They are not intended for medicinal, diagnostic or therapeutic use. The products may not be resold, modified for resale or used to manufacture commercial products without prior written approval from Kingfisher Biotech, Inc.

EXAMPLE



## Reagents for Animal Model and Animal Health Research

1000 Westgate Drive, St. Paul, MN 55114  
Customer.Service@KingfisherBiotech.com  
KingfisherBiotech.com  
651.646.0089