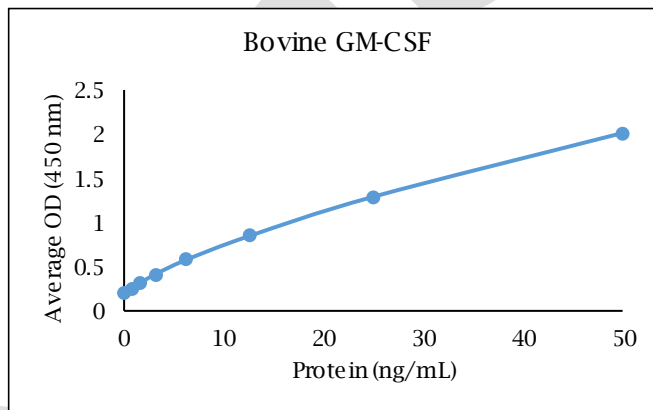


ANTI-BOVINE GM-CSF

Polyclonal Antibody



- Description:** Anti-bovine GM-CSF polyclonal antibody
- Catalog Number:** KP1507B-100
- Lot Number:** FS3316ES
- Quantity:** 100 µg
- Concentration:** 1.0 mg/mL
- Volume:** 100 µL
- Host:** Rabbit
- pPurification:** Bovine GM-CSF affinity chromatography
- Immunogen:** Recombinant Bovine GM-CSF
- Molecular Weight:** 14.3 kDa (calculated) for Bovine GM-CSF
- Formulation:** 1X PBS buffer containing 0.09% NaN₃
- Stability and Storage:** Stable for up to twelve months from date of receipt at 2-8°C.
- Country of Origin:** USA
- Applications:** **Western blot** - 0.1-2 µg/mL
ELISA - 1-5 µg/mL



| <u>Reagent</u> | <u>Information</u> | <u>Catalog Number</u> |
|--------------------|---------------------------|-----------------------|
| Capture Antibody | 2.5 µg/mL for 12-24 hours | KP1507B-100 |
| Standard Protein | 1 hour incubation | RP0871B-005 |
| Detection Antibody | 0.3 µg/mL for 1 hour | KPB1508B-050 |
| SA-HRP | Use as recommended. | AR0068-001 |
| TMB | 30 minute incubation | AR0133-002 |



Reagents for Animal Model and Animal Health Research

1000 Westgate Drive, St. Paul, MN 55114
Customer.Service@KingfisherBiotech.com
KingfisherBiotech.com
651.646.0089

ANTI-BOVINE GM-CSF

Polyclonal Antibody

| | | |
|-------------------------------------|-------------------------------|------|
| Cross-reactivity: (ELISA) | Recombinant canine GM-CSF | None |
| | Recombinant caprine GM-CSF | None |
| | Recombinant chicken GM-CSF | None |
| | Recombinant cynomolgus GM-CSF | None |
| | Recombinant equine GM-CSF | None |
| | Recombinant feline GM-CSF | None |
| | Recombinant human GM-CSF | None |
| | Recombinant mouse GM-CSF | None |
| | Recombinant ovine GM-CSF | None |
| | Recombinant rabbit GM-CSF | None |
| | Recombinant rat GM-CSF | None |
| Recombinant swine GM-CSF | None | |

Warranty: Products are warranted by Kingfisher Biotech, Inc. to meet stated product specifications and to conform to label descriptions when used, handled and stored according to instructions. Unless otherwise stated, this warranty is limited to one year from date of sale or expiry date, whichever comes first. Kingfisher Biotech's sole liability for the product is limited to replacement of the product or refund of the purchase price. Kingfisher Biotech products are supplied for research applications. They are not intended for medicinal, diagnostic or therapeutic use. The products may not be resold, modified for resale or used to manufacture commercial products without prior written approval from Kingfisher Biotech, Inc.



Reagents for Animal Model and Animal Health Research

1000 Westgate Drive, St. Paul, MN 55114
Customer.Service@KingfisherBiotech.com
KingfisherBiotech.com
651.646.0089