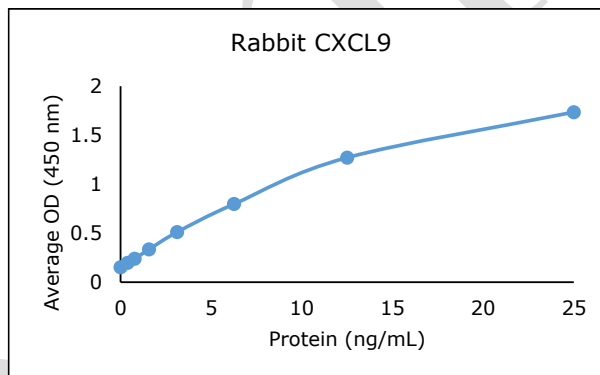


ANTI-RABBIT CXCL9

Polyclonal Antibody



Description:	Anti-rabbit CXCL9 polyclonal antibody
Catalog Number:	KP1305U-100
Lot Number:	BR2728BR
Quantity:	100 µg
Concentration:	1.0 mg/mL
Volume:	100 µL
Host:	Chicken
Alias:	MIG
Purification:	Rabbit CXCL9 affinity chromatography
Immunogen:	Recombinant rabbit CXCL9
Molecular Weight:	11.5 kDa (calculated) for rabbit CXCL9
Formulation:	1X PBS buffer containing 0.09% NaN ₃
Stability and Storage:	Stable for up to twelve months from date of receipt at 2-8°C.
Country of Origin:	USA
Applications:	Western blot - 0.1-2 µg/mL ELISA - 1-5 µg/mL



<u>Reagent</u>	<u>Information</u>	<u>Catalog Number</u>
Capture Antibody	2.5 µg/mL for 12-24 hours	KP1305U-100
Standard Protein	1 hour incubation	RP2576U-005
Detection Antibody	0.2 µg/mL for 1 hour	KPB1306U-050
SA-HRP	Use as recommended.	AR0068-001
TMB	12 minute incubation	AR0133-002

Reagents for Animal Model and Animal Health Research

1000 Westgate Drive, St. Paul, MN 55114
Customer.Service@KingfisherBiotech.com
KingfisherBiotech.com
651.646.0089



ANTI-RABBIT CXCL9

Polyclonal Antibody

Cross-reactivity: (ELISA)	Recombinant bovine CXCL9	None
	Recombinant equine CXCL9	None
	Recombinant feline CXCL9	None
	Recombinant human CXCL9	Moderate
	Recombinant mouse CXCL9	None
	Recombinant ovine CXCL9	None
	Recombinant rat CXCL9	None
	Recombinant swine CXCL9	None

Warranty: Products are warranted by Kingfisher Biotech, Inc. to meet stated product specifications and to conform to label descriptions when used, handled and stored according to instructions. Unless otherwise stated, this warranty is limited to one year from date of sale or expiry date, whichever comes first. Kingfisher Biotech's sole liability for the product is limited to replacement of the product or refund of the purchase price. Kingfisher Biotech products are supplied for research applications. They are not intended for medicinal, diagnostic or therapeutic use. The products may not be resold, modified for resale or used to manufacture commercial products without prior written approval from Kingfisher Biotech, Inc.



Reagents for Animal Model and Animal Health Research

1000 Westgate Drive, St. Paul, MN 55114
Customer.Service@KingfisherBiotech.com
KingfisherBiotech.com
651.646.0089