

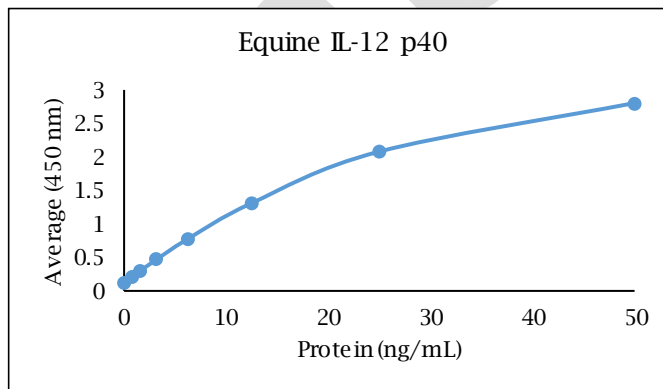
ANTI-EQUINE IL-12 p40

Polyclonal Antibody



- Description:** Anti-equine IL-12 p40 polyclonal antibody
- Catalog Number:** KP1225E-100
- Lot Number:** IQ2540HQ
- Quantity:** 100 µg
- Concentration:** 1.0 mg/mL
- Volume:** 100 µL
- Host:** Rabbit
- Purification:** Equine IL-12 p40 affinity chromatography
- Immunogen:** Recombinant equine IL-12 p40
- Molecular Weight:** 34.9 kDa (calculated) for equine IL-12 p40
- Formulation:** 1X PBS buffer containing 0.09% NaN₃
- Stability and Storage:** Stable for up to twelve months from date of receipt at 2-8°C.
- Country of Origin:** USA
- Applications:** **Western blot** - 0.1-2 µg/mL
ELISA - 1-5 µg/mL

The recommended concentrations are approximate values. Optimal dilutions should be determined for each application.



<u>Reagent</u>	<u>Information</u>	<u>Catalog Number</u>
Capture Antibody	2.5 µg/mL for 12-24 hours	KP1225E-100
Standard Protein	1 hour incubation	RP0924E-005
Detection Antibody	0.5 µg/mL for 1 hour	KPB1226E-050
SA-HRP	Use as recommended.	AR0068-001
TMB	30 minute incubation	AR0133-002



Reagents for Animal Model and Animal Health Research

1000 Westgate Drive, St. Paul, MN 55114
Customer.Service@KingfisherBiotech.com
KingfisherBiotech.com
651.646.0089

ANTI-EQUINE IL-12 p40

Polyclonal Antibody

Cross-reactivity: (ELISA)	Recombinant bovine IL-12 p40	Weak
	Recombinant chicken IL-12 p40	Weak
	Recombinant feline IL-12 p40	Moderate
	Recombinant ovine IL-12 p40	Moderate
	Recombinant swine IL-12 p40	Moderate

Warranty: Products are warranted by Kingfisher Biotech, Inc. to meet stated product specifications and to conform to label descriptions when used, handled and stored according to instructions. Unless otherwise stated, this warranty is limited to one year from date of sale or expiry date, whichever comes first. Kingfisher Biotech's sole liability for the product is limited to replacement of the product or refund of the purchase price. Kingfisher Biotech products are supplied for research applications. They are not intended for medicinal, diagnostic or therapeutic use. The products may not be resold, modified for resale or used to manufacture commercial products without prior written approval from Kingfisher Biotech, Inc.

EXAMPLE



Reagents for Animal Model and Animal Health Research

1000 Westgate Drive, St. Paul, MN 55114
Customer.Service@KingfisherBiotech.com
KingfisherBiotech.com
651.646.0089