

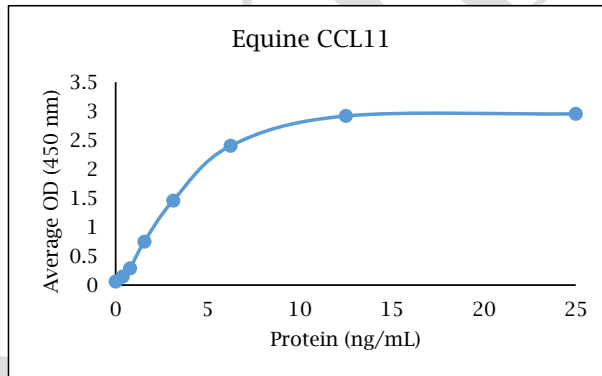
ANTI-EQUINE CCL11

Polyclonal Antibody



- Description:** Anti-equine CCL11 polyclonal antibody
- Catalog Number:** KP1160E-100
- Lot Number:** BQ2321BQ
- Quantity:** 100 µg
- Concentration:** 1.0 mg/mL
- Volume:** 100 µL
- Host:** Rabbit
- Alias:** Eotaxin-1
- Purification:** Equine CCL11 affinity chromatography
- Immunogen:** Recombinant equine CCL11
- Molecular Weight:** 9.0 kDa (calculated) for equine CCL11
- Formulation:** 1X PBS buffer containing 0.09% NaN₃
- Stability and Storage:** Stable for up to twelve months from date of receipt at 2-8°C.
- Country of Origin:** USA
- Applications:** **Western blot** - 0.1-2 µg/mL
ELISA - 1-5 µg/mL

The recommended concentrations are approximate values. Optimal dilutions should be determined for each application.



<u>Reagent</u>	<u>Information</u>	<u>Catalog Number</u>
Capture Antibody	2.5 µg/mL for 12-24 hours	KP1160E-100
Standard Protein	1.5 hour incubation	RP0066E-005
Detection Antibody	0.1 µg/mL for 1 hour	KPB1161E-050
SA-HRP	Use as recommended.	AR0068-001
TMB	30 minute incubation	AR0133-002

Reagents for Animal Model and Animal Health Research

1000 Westgate Drive, St. Paul, MN 55114
Customer.Service@KingfisherBiotech.com
KingfisherBiotech.com
651.646.0089



ANTI-EQUINE CCL11

Polyclonal Antibody

Cross-reactivity: (ELISA)	Recombinant bovine CCL11	Moderate
	Recombinant caprine CCL11	Moderate
	Recombinant cynomolgus CCL11	None
	Recombinant guinea pig CCL11	Weak
	Recombinant human CCL11	None
	Recombinant mouse CCL11	None
	Recombinant swine CCL11	None

Warranty: Products are warranted by Kingfisher Biotech, Inc. to meet stated product specifications and to conform to label descriptions when used, handled and stored according to instructions. Unless otherwise stated, this warranty is limited to one year from date of sale or expiry date, whichever comes first. Kingfisher Biotech's sole liability for the product is limited to replacement of the product or refund of the purchase price. Kingfisher Biotech products are supplied for research applications. They are not intended for medicinal, diagnostic or therapeutic use. The products may not be resold, modified for resale or used to manufacture commercial products without prior written approval from Kingfisher Biotech, Inc.

EXAMPLE



Reagents for Animal Model and Animal Health Research

1000 Westgate Drive, St. Paul, MN 55114
Customer.Service@KingfisherBiotech.com
KingfisherBiotech.com
651.646.0089