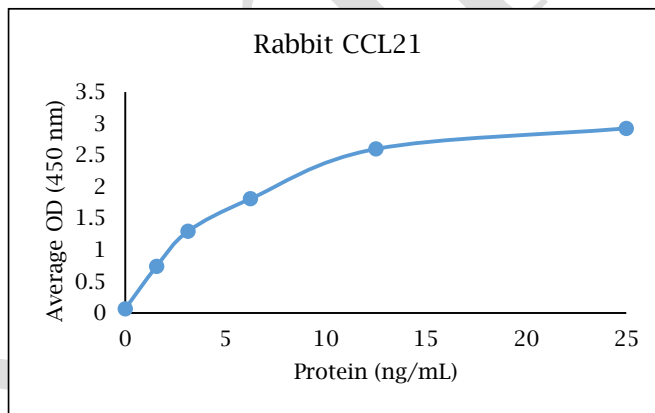


ANTI-RABBIT CCL21

Polyclonal Antibody



Description:	Anti-rabbit CCL21 polyclonal antibody
Catalog Number:	KP1119U-100
Lot Number:	LP2236KP
Quantity:	100 µg
Concentration:	1.0 mg/mL
Volume:	100 µL
Host:	Chicken
Alias:	6Ckine
Purification:	Rabbit CCL21 affinity chromatography
Immunogen:	Recombinant rabbit CCL21
Molecular Weight:	12.0 kDa (calculated) for rabbit CCL21
Formulation:	1X PBS buffer containing 0.02% NaN ₃
Stability and Storage:	Stable for up to twelve months from date of receipt at 2-8°C.
Country of Origin:	USA
Applications:	Western blot - 0.1-2 µg/mL ELISA - 1-5 µg/mL



<u>Reagent</u>	<u>Information</u>	<u>Catalog Number</u>
Capture Antibody	2.5 µg/mL for 12-24 hours	KP1119U-100
Standard Protein	1 hour incubation	RP0976U-005
Detection Antibody	0.1 µg/mL for 1 hour	KPB1120U-050
SA-HRP	Use as recommended.	AR0068-001
TMB	5 minute incubation	AR0133-002



Reagents for Animal Model and Animal Health Research

1000 Westgate Drive, St. Paul, MN 55114
Customer.Service@KingfisherBiotech.com
KingfisherBiotech.com
651.646.0089

ANTI-RABBIT CCL21

Polyclonal Antibody

Warranty: Products are warranted by Kingfisher Biotech, Inc. to meet stated product specifications and to conform to label descriptions when used, handled and stored according to instructions. Unless otherwise stated, this warranty is limited to one year from date of sale or expiry date, whichever comes first. Kingfisher Biotech's sole liability for the product is limited to replacement of the product or refund of the purchase price. Kingfisher Biotech products are supplied for research applications. They are not intended for medicinal, diagnostic or therapeutic use. The products may not be resold, modified for resale or used to manufacture commercial products without prior written approval from Kingfisher Biotech, Inc.

Example



Reagents for Animal Model and Animal Health Research

1000 Westgate Drive, St. Paul, MN 55114
Customer.Service@KingfisherBiotech.com
KingfisherBiotech.com
651.646.0089